

PLAYBILL®

LINCOLN CENTER THEATER
AT THE VIVIAN BEAUMONT

uncle vanya



LINCOLN CENTER THEATER AT THE VIVIAN BEAUMONT

André Bishop
Producing Artistic Director

Adam Siegel
Managing Director

Naomi Grabel
Executive Director of
Development & Planning

presents

uncle vanya

By
Anton Chekhov

A New Version by
Heidi Schreck

with (in alphabetical order)

Steve Carell Jonathan Hadary William Jackson Harper

Jayne Houdyshell Spencer Donovan Jones Mia Katigbak

Alfred Molina Alison Pill Anika Noni Rose

Sets	Costumes	Lighting	Sound
Mimi Lien	Kaye Voyce	Lap Chi Chu & Elizabeth Harper	Mikhail Fiksel & Beth Lake

Casting	Stage Manager	Vocal Coach
Daniel Swee	Charles M. Turner III	Kate Wilson

General Manager	Production Manager	Director of Marketing	General Press Agent
Jessica Niebanck	Paul Smithyman	Linda Mason Ross	Juliana Hannett

Directed by
Lila Neugebauer

Opening Night is sponsored by Michael Kors and Lance Le Pere.

UNCLE VANYA is made possible thanks to the generosity of James Keith (JK) Brown and Eric Diefenbach, The Gladys Kriebel Delmas Foundation, and evolved with support from the LCT Daryl Roth Play and Musical Theater Development Program.

Our thanks to the Jerome L. Greene Foundation for their gift honoring André Bishop as Producing Artistic Director and to Denise Littlefield Sobel.

American Airlines is the Official Airline of Lincoln Center Theater.



Steve
Carell



Jonathan
Hadary



William Jackson
Harper



Jayne
Houdyshell



Spencer Donovan
Jones



Mia
Katigbak



Alfred
Molina



Alison
Pill



Anika Noni
Rose



Michael Bryan
French



Marceline
Hugot



Brenda
Meaney



Stephen Conrad
Moore



Robert
Stanton

SHOP NOW

for all your Broadway merchandise
and Playbill souvenirs

PLAYBILLSTORE.com

[PLAYBILL.COM/VAULT](https://www.playbill.com/vault)

PLAYBILL®

Dear Friends,

Welcome back to the theatre! As you all know, theatre is a shared human experience. It is made and managed by dedicated, caring people. All the professionals working in this theatre are there to help you. They are trained and knowledgeable, and want you to have the best experience at the show.

We know some of you have been away from our theatres for some time, and we welcome you back with open arms. As audience members, you are essential to this theatrical experience—the show could not go on without you. You are an important part of the show by helping maintain the sanctity of this space.

SO TO HELP YOU (AND THE PEOPLE AROUND YOU)
HAVE THE BEST TIME, WE PLEASE ASK THAT YOU:

- Always cooperate with the ushers and front-of-house staff. They are there to help you, keep an orderly environment, and ensure the show begins as scheduled.
- Turn off your cell phones. All the way off...
- Unwrap all candies now and refrain from loud eating during the performance.
- Treat all theatre staff you see with respect and kindness. They want you to have a great time, and they deserve respect and a positive work environment.
- Be engaged in the show! But also be respectful of the people around you and do not make any overly disruptive comments.
- Do not sing along with the actors. It distracts your fellow theatregoers and is not thoughtful.
- Do not engage with the actors or musicians working in the show. Only engage if they encourage you to, and please do not distract them at any time during the performance.
- Stop drinking alcohol immediately if you're feeling tipsy. Drink some water.
- Be patient with the restroom lines. We know they're long and space is tight. But do not become pushy or rude. Everyone will get their turn.
- Relax, sit back, and enjoy the show! Once again, we would not be here without you.

Sincerely,
Philip S. Birsh
President and Chairman
Playbill Inc

CAST

(in order of speaking)

Marina	MIA KATIGBAK
Astrov	WILLIAM JACKSON HARPER
Vanya	STEVE CARELL
Alexander	ALFRED MOLINA
Waffles	JONATHAN HADARY
Sonia	ALISON PILL
Elena	ANIKA NONI ROSE
Maria	JAYNE HOUDYSHELL
Neighbor	SPENCER DONOVAN JONES
1st Assistant Stage Manager	KAITLIN LEIGH MARSH
2nd Assistant Stage Manager	MONÉT THIBOU

UNDERSTUDIES

Understudies never substitute for the listed performers unless a specific announcement is made at the time of the appearance.

For Marina, Maria—MARCELINE HUGOT; for Astrov—STEPHEN CONRAD MOORE; for Vanya—ROBERT STANTON; for Alexander, Waffles, Neighbor—MICHAEL BRYAN FRENCH; for Sonia, Elena—BRENDA MEANEY.

SETTING

A country estate and working farm.

THERE WILL BE ONE 15-MINUTE INTERMISSION.

*Please take a copy of
The Lincoln Center Theater Review
available in stands here in the lobby
for a more comprehensive look at the world of UNCLE VANYA.*



The use of any recording device, either audio or video, and the taking of photographs, either with or without flash, is strictly prohibited. Please turn off all electronic devices such as cellular phones, beepers and watches. The use of cell phones in the theatre is prohibited by New York City law.

On stage or off...
Find your next gig through
PLAYBILL JOBS

Visit Playbill.com/Jobs to apply for everything from internships to administrative positions.

PLAYBILL.COM/VAULT

WHO'S WHO IN THE CAST

STEVE CARELL (*Vanya*). LCT and Broadway debut. Steve last appeared on stage in *Sin* at the Goodman in Chicago, and then at Second Stage in NYC. His film credits include *Anchorman*; *The 40-Year-Old Virgin*; *Little Miss Sunshine*; *Get Smart*; *Foxcatcher*; *The Big Short*; *Dan in Real Life*; *Beautiful Boy*; *Vice*; *Date Night*; *The Way, Way Back*; *Crazy Stupid Love*; *Battle of the Sexes*; and *Seeking a Friend for the End of the World*; among others. TV includes "The Office," "The Morning Show," "The Patient," "The Daily Show With Jon Stewart" and "The Dana Carvey Show." Steve is an alum of Second City Chicago.

JONATHAN HADARY (*Waffles*). LCT: *Epiphany*, *Golden Boy*, *Awake and Sing!* (Drama Desk Ensemble Award), *A Bad Friend*. Broadway: *Spamalot*, *All Shook Up*, *The Best Man*, *Guys and Dolls*, *Gypsy* (Tony nomination), *As Is* (Obie Award), *Torch Song Trilogy*, *Gemini*. Off-Broadway: *A Bright Room Called Day*; *Coriolanus* (Bayfield Award); *Indian Summer*; *Rocket to the Moon* (Drama Desk nom.); *Middle of the Night*; *The Comedy of Errors*; *The Destiny of Me*; *The Winter's Tale*; *God Bless You, Mr. Rosewater*; *Scrambled Feet*; *El Grande de Coca-Cola*; *Assassins*. National tour: *Angels in America* (Joseph Jefferson, Helen Hayes awards). Film: *Margaret*, *Intolerable Cruelty*, *Bait*, *A Time to Kill*. TV: "Girls5Eva," "Veep," "At Home With Amy Sedaris," "Horace and Pete," "Russian Doll," "The Heart, She Holler."

WILLIAM JACKSON HARPER (*Astrov*). LCT3: *After the Blast*. Broadway: *All the Way*. Off-Broadway: *Travisville* (Ensemble Studio Theatre); *Primary Trust* (Roundabout,

Obie Award); *A Family for All Occasions* (LAByrinth); *Modern Terrorism...* (Second Stage); *The Total Bent*, *Titus Andronicus*, *Measure for Measure* (The Public); *Placebo*, *A Cool Dip in the Barren Saharan Crick* (Playwrights Horizons); *Ruined* (MTC); and *Queens Boulevard* (the musical), *Paradise Park* (Signature). Film: *Ant-Man and the Wasp*; *Quantumania*, *Landscape With Invisible Hand*, *We Broke Up*, *Jodie*, *Dark Waters*, *Midsommar*, *Lost Holiday*, *Paterson*, *How to Tell You're a Douchebag*. TV: "The Resort," "Love Life" (Critics' Choice, NAACP Image Award nominations), "A Man in Full," "The Underground Railroad" (Critics' Choice Award nom.), "The Good Place" (Emmy nom., two Critics' Choice award noms.).

JAYNE HOUDYSHELL (*Maria*). LCT: *The New Century*. Broadway: *The Music Man* (2022 Tony nomination); *King Lear*; *A Doll's House, Part 2* (2017 Tony nom.); *The Humans* (2016 Tony Award); *Fish in the Dark*; *Romeo and Juliet*; *Follies* (2012 Tony nom.); *The Importance of Being Earnest*; *Bye Bye Birdie*; *Wicked*; *Well* (2006 Tony nom., Theatre World Award). Off-Broadway: *The Pain and the Itch* (Playwrights Horizons), *Well* (The Public), *The Language Archive* (Roundabout), *Relevance* (MCC), *The Receptionist* (MTC), *Much Ado About Nothing* (Shakespeare in the Park). Awards: two Drama Desks, two Obies. Regional credits include Yale Rep, McCarter, Actors Theatre of Louisville, Arena Stage and many others. Film: *Causeway*, *The Humans*, *Little Women*. TV: "Only Murders in the Building," "The Good Fight," "Evil," "Law & Order: SVU," "Elementary," "Blue Bloods."

SUBSCRIBE TODAY!

HAVE PLAYBILL® DELIVERED TO YOUR DOOR

Subscribe to Playbill's MONTHLY MAGAZINE for features and interviews with Broadway's best and brightest.

Plus subscription exclusives:

- Monthly puzzle
- Additional features, quizzes, and the Playbill horoscope

12 ISSUES
FOR \$

30

PLAYBILL®

MONTHLY MAGAZINE

Subscribe at PLAYBILL.COM/MAGAZINE

Or call 888-558-2054



PLAYBILL.COM/VAULT

WHO'S WHO IN THE CAST

SPENCER DONOVAN JONES (*Neighbor*). LCT and Broadway debut. National tour: *The King and I*. The Muny: *The Little Mermaid*, *Beauty and the Beast*, *Tarzan*. Jones grew up performing at The Muny in St. Louis and began playing the violin at age four. During the pandemic, he taught himself guitar, which led to a newfound interest in songwriting.

MIA KATIGBAK (*Marina*). LCT3: *The Headlands*. NY theater: Annie Baker's *Infinite Life* (Atlantic); National Theatre, London); *Romeo and Juliet*, *Out of Time*, Caryl Churchill's *What If If Only* (U.S. premiere), *Henry VI* (St. Clair Bayfield Award), *Awake and Sing!* (Obie Award) all with NAATCO (National Asian American Theatre Company); *A Delicate Balance* (Transport Group); Ivo van Hove's *Scenes From a Marriage* (NYTW). Other NY theater: Soho Rep, New Georges, WP, Clubbed Thumb, Ma-Yi, Target Margin. Regional: Two River, Yale Rep, Long Wharf, Berkeley Rep, The Guthrie. TV: "How to Get Away With Murder," "The Sinner," "Chicago PD." Awards: USA Fellowship, TCG's Fox Foundation Resident Actor Fellow for Distinguished Achievement, Special Drama Desk Award. Actor-manager & co-founder of NAATCO. Education: BA, Barnard College; MA, Columbia University.

ALFRED MOLINA (*Alexander*). LCT debut. Broadway includes Yasmina Reza's *Art*, Tevye in *Fiddler on the Roof* and Mark Rothko in *Red*, receiving a Tony nomination for each. Additional theatre includes *Oklahoma!* (West End, Olivier nom.); *Speed-the-Plow* (National Theatre, Olivier nom.); and *The Father*, *Inherit the Wind* (Pasadena Playhouse). Films include *Raiders of the Lost Ark*, *Prick Up Your Ears*, *Chocolat*, *Frida*, *Love Is Strange*, *Spiderman 2* and *Spiderman: No Way Home*. TV includes "The Normal Heart," "Show Me a Hero" (HBO); "Feud: Bette and Joan" (FX); and "Three Pines" (Prime Video).

ALISON PILL (*Sonia*). LCT debut. Broadway: *Three Tall Women*, *The House of Blue Leaves*, *The Miracle Worker*, *Mauritius*, *The Lieutenant of Inishmore* (Tony Award nomination). Off-Broadway includes *On the Mountain* (Lortel Award) and *The Distance From Here* (U.S. premiere, Drama Desk Award for Outstanding Ensemble). Films

include *Eric Larue* (dir. Michael Shannon, premiered at Tribeca); *Young Werther*; Peter Hedges' *The Same Storm*; *Vice* (written and directed by Adam McKay); *Miss Sloane*; *Hail, Caesar!*; *Snowpiercer*; *Goon*; *Scott Pilgrim vs. the World*; *Milk*; *Dan in Real Life*; *Dear Wendy*; and *Pieces of April*. TV includes "Hello Tomorrow!," "Star Trek: Picard," Alex Garland's "Devs," "Them," Ryan Murphy's "American Horror Story: Cult," "The Family," Aaron Sorkin's "The Newsroom" and "In Treatment."

ANIKA NONI ROSE (*Elena*). LCT debut. Broadway: *Caroline, or Change* (Tony, Lortel, Theatre World, Obie, Clarence Derwent awards; Drama Desk nomination); *A Raisin in the Sun* (Tony, Outer Critics Circle award noms.); *Cat on a Hot Tin Roof* (dir. Debbie Allen); *Footloose*. Additional theater: *Carmen Jones* (Lortel, AUDELCO awards; DD, OCC noms.) and *Company* (NY Philharmonic). Film: voice of Princess Tiana in Disney's *The Princess and The Frog* (first African American Disney princess; Disney Legend inductee); Lorell Robinson in *Dreamgirls* (AFI Ensemble Award; SAG, Grammy award noms.); *for colored girls*. TV: "Let the Right One In," Regina in "Maid" (2022 NAACP Image Award nom.), Jukebox in "Power," Kizzy in "Roots" (NAACP Image Award nom.), "The No. 1 Ladies Detective Agency."

MICHAEL BRYAN FRENCH (*Understudy Alexander*, *Waffles*, *Neighbor*). LCT debut. Broadway: *The Minutes*; *To Kill a Mockingbird*; *The Height of the Storm*; *Hillary and Clinton*; *A Doll's House, Part 2*; *The Humans*. Off-Broadway: MTC, Roundabout, The Public, Playwrights Horizons, Vineyard, Wooster Group. Film: *This Is Where I Leave You*, *Big Fat Liar*. TV: "The Flight Attendant," "Orange Is the New Black," "Quantum Leap," "CSI," "The Good Wife," "Breaking Bad," "Elementary," "24," "Prison Break," "The X-Files," "Madoff."

MARCELINE HUGOT (*Understudy Marina*, *Maria*). LCT: *Measure for Measure*; *Marys Seacole* (LCT3). Broadway: *Prelude to a Kiss* (Roundabout). Off-Broadway: *The Cider House Rules* (Atlantic), *Christina Alberta's Father* (Vineyard). Regional: *Joy and Pandemic* (Huntington); *The School for Scandal*, *Private Lives* (McCarter); *Lake Hollywood* (Guthrie); *Pride's Crossing* (Old

WHO'S WHO IN THE CAST

Globe). Film includes *She Said*, *Blow the Man Down*, *Julie and Julia*, *The Dictator*, *United 93* and *Working Girl*. TV includes "Black Mirror," "What We Do in the Shadows," "The Sinner," "Better Call Saul," "Godless," "The Americans," "The Leftovers" and "30 Rock."

BRENDA MEANEY (*Understudy Sonia, Elena*). LCT debut. Off-Broadway: *Indian Ink* (Roundabout); *Incognito* (MTC); *Party Face* (City Center); *Fuente Ovejuna* (TFANA); *Little Gem* (Irish Rep); *The Mountains Look Different*, *The New Morality* (The Mint). Regional: *Venus in Fur*, *The Hard Problem* (A.C.T.); *queens* (La Jolla); *The Caucasian Chalk Circle*, *Owners* (Yale Rep); *And a Nightingale Sang* (Westport Country Playhouse). International: *Bedbound* (Landmark), *Basin* (Anu Productions). Film: *Fear the Night*, *There's Always Hope*. TV: "For Life," "FBI: Most Wanted," "Hell on Wheels," "Love/Hate." MFA, Yale School of Drama.

STEPHEN CONRAD MOORE (*Understudy Astrov*). LCT debut. Off-Broadway: Colman Domingo's *Dot* (dir. Susan Stroman, Vineyard), *Emancipation* (Classical Theatre of Harlem). Selected theater includes McCarter, Guthrie, American Theatre Company, Philadelphia Theatre Company, Shakespeare Theatre Company (DC), Yale Rep, Virginia Stage Company, KC Rep and Arizona Theatre Company. Select TV includes "The Bold Type" (five seasons), "Better Call Saul," "Empire," "Chicago PD," "The Path," "The Good Fight," "The Blacklist," "Elementary" and "Empire." Education: MFA, Yale School of Drama.

ROBERT STANTON (*Understudy Vanya*). LCT: *A Free Man of Color*, *The Coast of Utopia*. Broadway: *Ink*, *Saint Joan*, *Mary Stuart*, *A Small Family Business*. Off-Broadway: two dozen credits include *Love Child* (written and performed with Daniel Jenkins) and *All in the Timing* (Obie Award). Off-Off-Broadway includes *The Gold Room*. Films: over 20, from *A League of Their Own* to *Jason Bourne*. Recent television includes "Pretty Little Liars: Original Sin" and "Mr. Mercedes."

ANTON PAVLOVICH CHEKHOV 1860–1904 (*Playwright*) was born in Taganrog, a port city in southwestern Russia, less than 100 kilometers from the border of present-day Ukraine. Chekhov's grandfather was a serf who had bought his family's liberation before

the end of serfdom in 1861, and young Anton grew up largely in poverty and paid his way through medical school in Moscow by writing short humor vignettes centered on daily Russian life. In 1887, a theatre manager commissioned Chekhov to write a play, the result of which was *Ivanov*. Chekhov followed that play with four more that would go on to become pillars of modern drama: *The Seagull* (1895), *Uncle Vanya* (1897), *Three Sisters* (1900) and *The Cherry Orchard* (1903). He died from tuberculosis at the age of 44, leaving behind a body of work that spanned poems, plays, short stories and novellas.

HEIDI SCHRECK (*Translator/Adaptor*). LCT debut. Her critically acclaimed play *What the Constitution Means to Me* played a sold-out run on Broadway in 2019 and was nominated for two Tony Awards. A filmed version of the play premiered on Amazon Prime Video, and was nominated for a Critics Choice Award, PGA Award and DGA Award. *What the Constitution Means to Me* was named Best of the Year by *The New York Times*, *Time* magazine, *The Hollywood Reporter* and more. Schreck's other plays include *Grand Concourse*, *Creature* and *There Are No More Big Secrets*. Screenwriting credits include "I Love Dick," "Billions" and "Nurse Jackie." Awards: three Obies, a Drama Desk, the Horton Foote Playwriting Award, the Dramatists Guild's Hull-Warriner Award, *Smithsonian* magazine's 2019 American Ingenuity Award. She has also worked as a teacher and journalist in St Petersburg, Russia, and has done live simultaneous translations of plays by Chekhov, Gorky and Ostrovsky.

LILA NEUGEBAUER (*Director*). LCT: Sarah DeLappe's *The Wolves*; Zoe Kazan's *After the Blast*, Abe Koogler's *Kill Floor* (LCT3). Broadway: Kenneth Lonergan's *The Waverly Gallery*, Branden Jacobs Jenkins' *Appropriate*. Recent Off-Broadway: Simon Stephens' *Morning Sun* (MTC); Tracy Letts' *Mary Page Marlowe* (Second Stage); Annie Baker's *The Antipodes*, Branden Jacobs-Jenkins' *Everybody* and Edward Albee's *At Home at the Zoo: Homelife/The Zoo Story* (Signature). As co-artistic director of The Mad Ones, she directed and co-authored *Mrs. Murray's Menagerie* (Ars Nova) and *Miles for Mary* (Playwrights Horizons), among others. TV: "Maid" (Netflix); "The Last Thing

WHO'S WHO IN THE CAST

He Told Me" (Apple TV+); "The Sex Lives of College Girls," "Room 104" (HBO). Obie Award, Drama Desk Sam Norkin Special Award, Princess Grace Award recipient. Her feature film directorial debut, *Causeway*, starring Jennifer Lawrence and Brian Tyree Henry (Oscar nomination) is available on Apple TV+.

MIMI LIEN (*Sets*). LCT: *The Oldest Boy*; *War, Preludes, Stop Hitting Yourself* (Rude Mechs), *Luck of the Irish* (LCT3). Selected works include *Natasha, Pierre & the Great Comet of 1812* (Tony Award); *Sweeney Todd*; *True West* (Roundabout); *A 24-Decade History of Popular Music* (St. Ann's Warehouse); *Fairview, An Octoroon* (Soho Rep). Opera: *Parsifal* (Bayreuther Festspiele), *Die Zauberflöte* (Staasoper Berlin), *Antony and Cleopatra* (San Francisco Opera), *Intelligence* (Houston Grand Opera) and *Grounded* (Washington National Opera). Lien also creates large-scale public artworks/installations such as The GREEN at Lincoln Center where she is an artist-in-residence. Awards: Obie, Drama Desk, Lortel, Bessie, Cullman Award for Extraordinary Creativity, L.A. Drama Critics Circle, Hewes Design Award, 2015 MacArthur Fellow. Co-founder of JACK (Brooklyn).

KAYE VOYCE (*Costumes*). LCT: *Greater Clements, The Mystery of Love & Sex, 4000 Miles*; *Marys Seacole, queens, After the Blast, Luce* (LCT3). Broadway: *Sea Wall/A Life* (also The Public), *True West, The Nap, Significant Other, The Real Thing, The Realistic Joneses, Shining City*. Recent Off-Broadway includes *Jonah* (Roundabout); *Lucy* (Audible/Minetta Lane); *The Bedwetter, Shhhh* (Atlantic); *Morning Sun* (MTC); *Hurricane Diane* (NYTW); *Dying City, Mary Page Marlowe* (Second Stage); *Harry Clarke* (Vineyard/Berkeley Rep/London); *At Home at the Zoo, The Antipodes, Signature Plays, The Wayside Motor Inn* (Signature Theatre); and *Coriolanus, Measure for Measure, Hamlet* (The Public). Opera: *Stranger Love* (world premiere, L.A. Philharmonic), *The Listeners* (world premiere, Den Norske Opera). Upcoming: *Close Up* (Festival d'Avignon).

LAP CHI CHU (*Lighting*). LCT: *Camelot* (Tony Award nomination), *The Coast Starlight, The Wolves*. Recent theater includes *Morning Sun* (Lortel nom.). Other theater: The Public, NYTW, Signature, Roundabout, Geffen Playhouse, Oregon Shakespeare

Festival, Berkeley Rep, Goodman, Shakespeare Theatre Company. Awards: Obie Award for Sustained Excellence in Lighting Design, Lortel Award, L.A. Drama Critics Circle Angstrom Award for Career Achievement in Lighting Design, Ovation Award. Lighting design faculty at UCLA. www.lapchichu.com

ELIZABETH HARPER (*Lighting*). LCT debut. Theater includes *Between Two Knees* (Perelman Center for the Performing Arts, Yale Rep, McCarter, Oregon Shakespeare Festival); *Indecent, Rattlesnake Kate* (Denver Center for the Performing Arts); *Who's Afraid of Virginia Woolf?* (Geffen Playhouse); *Ma Rainey's Black Bottom* (dir. Phylicia Rashad, The Mark Taper Forum); and world premieres by Lucy Alibar, Kemp Powers, Julia Cho and Michael Mitnick. Assistant professor of lighting design at the University of Southern California.

MIKHAIL FIKSEL (*Sound*). LCT debut. Broadway: *Dana H*. Off-Broadway and other: *I Love You So Much I Could Die, How to Defend Yourself* (NYTW); *Tambo & Bones* (Playwrights Horizons); *Mexodus* (Baltimore Center Stage). Mikhail has worked with The Public, Signature, Vineyard, Goodman, Steppenwolf, Chicago Shakespeare Theater, Guthrie, Berkeley Rep, A.C.T., La Jolla, Third Rail Projects and Albany Park Theater Project. Film and TV: *The Wise Kids, Glitch, "In Memoriam."* Audio: "Lake Song," *City on Fire* (Make Believe Association); *Mr. K and The Flowers, The Good Enemy, The Podcaster, Massive* (Audible Originals). Recent awards include the 2023 Signal Award for Original Music and the 2022 Tony Award for Sound Design. Member of USA and TSDCA. www.mikhailfiksel.com

BETH LAKE (*Sound*). LCT: *Camelot* (with Marc Salzberg); as associate: *Intimate Apparel, My Fair Lady, The Wolves, The Oldest Boy*. Broadway associate: *The Cottage; for colored girls...; Pass Over; Is This a Room?; Dana H; The Play That Goes Wrong; Natasha, Pierre & the Great Comet of 1812*. Off-Broadway: *for colored girls..., The Play That Goes Wrong, The Wolves, Freud's Last Session*. Regional: *A Little Night Music* (Pasadena Playhouse); *Into the Woods* (Guthrie); *Kinky Boots* (Bucks County Playhouse); *Selling Kabul, Ghosts* (Williamstown Theatre Festival); *Kiss My*

WHO'S WHO IN THE CAST

Aztec (Hartford Stage, with Jessica Paz); *A Thousand Splendid Suns*, *American Girl Live*, *The Revolutionists*, *An Iliad*, *The Price* (Gulfshore Playhouse). MFA, UC-Irvine. Member USA829, IATSE.

KATE WILSON (*Vocal Coach*). LCT: *Camelot*, *War Horse*, *Admissions*, *The Mystery of Love & Sex*. Broadway: *An Enemy of the People*, *Mary Jane*, *Patriots*, *Doubt*, *Appropriate*, *Spamalot*, *The Sign in Sidney Brustein's Window*, *Leopoldstadt*, *Topdog/Underdog*, *The Piano Lesson*, *Take Me Out, MJ, for colored girls....*, *Skeleton Crew*, *Funny Girl*, *Moulin Rouge!*, *To Kill a Mockingbird*, *Beetlejuice*, *Burn This*, *The Lehman Trilogy*, *Tootsie*, *True West*, *Network*, *The Cher Show*, *The Iceman Cometh*, *Sweat*, *Violet*. Film: *Wildcat*, *Women Talking*, *Causeway*, *The Tragedy of Macbeth*, *Lady Bird*, *Three Billboards....*, *Carol*, *Inside Llewyn Davis*. TV: "Tokyo Vice," "Dopesick," "Mrs. America," "Little Women," "Olive Kitteridge." Faculty: Juilliard.

TOMMY KURZMAN (*Hair, Wig and Makeup Designer*). LCT: *Becky Nurse of Salem*, *My Fair Lady*, *The King and I*; *The Headlands* (LCT3). Broadway includes *I Need That*, *Gutenberg! The Musical!*, *The Cottage*, *Peter Pan Goes Wrong*, *Pictures From Home*, *The Collaboration*, *Macbeth*, *Mrs. Doubtfire*, *All My Sons*, *True West*, *Saint Joan*, *The Little Foxes* and *Bright Star*. Off-Broadway includes *Little Shop of Horrors* (Westside Theatre), MCC, Atlantic, The New Group, The Public, MTC and NWS. Regional credits include Huntington, Muni, Geva Theatre, Resident Ensemble Players, Cape Playhouse, Signature and MSM. Instagram: @tommykurzmanwigs

NIKIYA MATHIS (*Ms. Rose's Wigs*). LCT debut. Broadway includes *Jaja's African Hair Braiding*, *Death of a Salesman*, *Chicken and Biscuits*, *Topdog/Underdog* and *Once Upon a One More Time*. Off-Broadway includes MCC, The Public, Atlantic, Roundabout and National Black Theatre. As an actor, Nikiya is currently recurring in season 3 of "Power Book III: Raising Kanan." Awards: Obie, Henry Hewes Award, Black Women on Broadway, Broadway Black, Drama Desk nomination. MFA in acting, NYU Tisch.

CAITLIN RYAN O'CONNELL (*Associate Director*). LCT and Broadway debut. Recent directing: *King Philip's Head...* (Clubbed

Thumb), *Twin Size Beds* (Joe's Pub, Under the Radar) and *War of the Worlds* (Montana Rep). Upcoming: *Open Throat* by Henry Hoke at Little Island. Recent associate directing: *Infinite Life* (Atlantic); *Wakey, Wakey* (Signature); and *Underground Railroad Game* (Ars Nova). Caitlin runs a senior center theater program in Brooklyn supported by The Bushwick Starr. BA, Wellesley College; MFA, Brown University.

CHARLES M. TURNER III (*Stage Manager*). LCT: *Flex*, *The Skin of Our Teeth*, *Pipeline*, *How to Transcend a Happy Marriage*, *The Oldest Boy*; *Marys Seacole*, *War*, *Luce*, *Slowgirl*, *All-American* (LCT3). Broadway: *Death of a Salesman* (2022 revival), *The Parisian Woman*, *Hand to God*, *The Heidi Chronicles*, *The Performers*, *Golda's Balcony* and *Metamorphoses*. Off-Broadway: MTC, Roundabout, Signature, Encores!, Playwrights Horizons, Atlantic, The Public, Vineyard, Ars Nova, Soho Rep, CSC, Second Stage, MET, Cherry Lane, NYTW. Regional: Shakespeare Theatre Company, Philadelphia Theatre Company, Long Wharf, Hartford Stage, Paper Mill, NYSAF, A.R.T., Wadsworth Theatre, Pasadena Playhouse, A.C.T., Berkeley Rep, 5th Avenue, SSC, Cal Shakes, Alley Theatre, City Theatre, Actors Theatre of Louisville. @veronawall

KAITLIN LEIGH MARSH (*1st Assistant Stage Manager*). LCT: *The Coast Starlight*, *How to Transcend a Happy Marriage*, *My Fair Lady*; *Let's Call Her Patty*, *Marys Seacole*, *Pass Over* (LCT3). Broadway: *The Book of Mormon*, *Birthday Candles*, *Company*, *The Parisian Woman*, *The Waverly Gallery*. Off-Broadway: *Jonah*, *Scotland, PA*, *Toni Stone*, *Amy and the Orphans* (Roundabout); *Vietgone* (MTC); *Spain* (Second Stage); *My Broken Language*, *Twilight: Los Angeles, 1992*, *Our Lady of 121st Street* (Signature); *Then She Fell* (Third Rail Projects).

MONÉT THIBOU (*2nd Assistant Stage Manager*). LCT debut. Broadway: *Jaja's African Hair Braiding*, *Moulin Rouge!*, *Peter Pan Goes Wrong*, *Death of a Salesman*, *Mr. Saturday Night*. Off-Broadway: *Black Odyssey*, *Morning Sun*, *All the Natalie Portmans*, *The Wrong Man*, *Happy Talk*, *Clueless: The Musical*, *The True*. Developmental work: *Muriel's Wedding*, *Lempicka*, *Mandela*.

WHO'S WHO IN THE CAST

LINCOLN CENTER THEATER, now celebrating its 39th year, is one of New York's favorite not-for-profit theaters, with productions at Lincoln Center's Vivian Beaumont, Mitzi E. Newhouse and Claire Tow theaters and other theaters on and off Broadway, as well as touring productions nationally and around the world, TV and film projects and original cast recordings. *Uncle Vanya* is LCT's 219th production. LCT's other productions this season include *Corruption*, a new play by J.T. Rogers, directed by Bartlett Sher at the Mitzi E. Newhouse; and the LCT3 production of *The Keep Going Songs*, by Abigail and Shaun Bengson, directed by Caitlin Sullivan, which will begin performances Saturday, April 20 and open on Thursday, May 2 at the Claire Tow Theater.

LCT's production history includes a number of memorable New York, U.S. and world premieres including *Oslo* and *Blood and Gifts* by J.T. Rogers; *JUNK* and the Pulitzer Prize-winning *Disgraced* by Ayad Akhtar; the opera adaptation of *Intimate Apparel* with music by Ricky Ian Gordon and libretto by Lynn Nottage; *Admissions* by Joshua Harmon; *Pipeline* by Dominique Morisseau; *Act One* by James Lapine; *The City of Conversation* by Anthony Giardina; *Domesticated* by Bruce Norris; *Vanya and Sonia and Masha and Spike* by Christopher Durang; *4000 Miles* by Amy Herzog; *War Horse* based on the book by Michael Morpurgo; *The Oldest Boy*, *In the Next Room or the vibrator play*, *The Clean House*, *How to Transcend a Happy Marriage* and *Becky Nurse of Salem* by Sarah Ruhl; *The New Century* by Paul Rudnick; *Dying City* by Christopher Shinn; *The Coast of Utopia*, *The Invention of Love*, *Arcadia*, *Hapgood* and *The Hard Problem* by Tom Stoppard; *The Light in the Piazza* by Craig Lucas and Adam Guettel; *Hello Again*, *Bernarda Alba* and *Marie Christine* by Michael John LaChiusa; *Third, An American Daughter* and *The Sisters Rosensweig* by Wendy Wasserstein; *The Frogs* by Burt Shevelove, Nathan Lane and Stephen Sondheim; *A Bad Friend* by Jules Feiffer; *A Man of No Importance* by Terrence McNally, Stephen Flaherty and Lynn Ahrens; *The Glorious Ones*, *Dessa Rose* and *My Favorite Year* by Stephen Flaherty and Lynn Ahrens; *Other Desert Cities* and *Ten Unknowns* by Jon Robin Baitz; *Contact* by Susan Stroman and John Weidman; *Via Dolorosa* by David Hare; *Parade* by Alfred

Uhry, Jason Robert Brown and Harold Prince; *A New Brain* by William Finn and James Lapine; *Speed-the-Plow* by David Mamet; *Sarafina!* by Mbongeni Ngema; and *Six Degrees of Separation*, *A Free Man of Color* and *Nantucket Sleigh Ride* by John Guare. LCT's noteworthy revivals include Lerner & Loewe's *My Fair Lady*; *Falsettos* by William Finn and James Lapine; Rodgers & Hammerstein's *Carousel*, *South Pacific* and *The King and I*; August Wilson's *Joe Turner's Come and Gone*; Clifford Odets' *Golden Boy* and *Awake and Sing!*; Edward Albee's *Seascape* and *A Delicate Balance*; Shakespeare's *Macbeth*, *Cymbeline*, *King Lear*, *Henry IV* and *Twelfth Night*; *Dinner at Eight* by George S. Kaufman and Edna Ferber; Paul Osborn's *Morning's at Seven*; *The Heiress* by Ruth and Augustus Goetz; *Abe Lincoln in Illinois* by Robert E. Sherwood; *Our Town* and *The Skin of Our Teeth* by Thornton Wilder; *Waiting for Godot* by Samuel Beckett; *Anything Goes* by Cole Porter; *The Front Page* by Ben Hecht and Charles MacArthur; and *The House of Blue Leaves* by John Guare.

In addition to its full-scale productions, Lincoln Center Theater also develops new work and encourages emerging artists through play readings and workshops. *Open Stages*, LCT's education program, reaches thousands of New York City public school students with curriculum-related projects, tickets to LCT productions and a middle and high school Shakespeare program. The Theater also publishes the *Lincoln Center Theater Review*, which explores subjects related to LCT's productions.

In the fall of 2008, the theater inaugurated LCT3, which is dedicated to producing new work by the next generation of theater artists and bringing new audiences to Lincoln Center Theater. LCT3 has taken up residence in its permanent home, the Claire Tow Theater, LCT's third theater, the centerpiece of a 23,000 square-foot rooftop addition which also contains rehearsal and office space on the roof of the Vivian Beaumont Theater. Visit us online at www.LCT.org, visit our channel on YouTube, follow @LCTheater on Instagram, TikTok, Threads and X, and find LCT on Facebook.

"Who's Who in the Cast" is provided by the production. Where opinions are expressed, they are those of the players, not necessarily those of PLAYBILL Magazine.

LINCOLN CENTER THEATER**ANDRÉ BISHOP**

Producing Artistic Director

ADAM SIEGEL

Managing Director

NAOMI GRABEL

Executive Director of Development & Planning

Associate Director of

Information Technology Allotey Peacock

IT Assistant..... Billy Chaperon

DIRECTOR OF**THEATER OPERATIONS** MEGHAN LANTZY

Facilities Manager..... Michael Assalone

Office Manager Peter J. Studlo

Reception..... Zulivet Díaz-Román,

Michelle Metcalf

ADMINISTRATIVE STAFF**GENERAL MANAGER**.....JESSICA NIEBANCK

Associate General Manager..... Laura Stuart

General Management Associate...James R. Geoghegan

Assistant to the

Managing DirectorCamila Grisel H. H.

GENERAL PRESS AGENT..... JULIANA HANNETT

Press Associates..... Nicholas Buchholz, Kelly Guidó

Press Intern Quincy Shaindlin

PRODUCTION MANAGER.....PAUL SMITHYMAN

Associate Production Managers.... Kevin Orzechowski,

Polina Minchuk Macklin

DEVELOPMENT

Associate Director of Development &

Special Events ManagerKarin Schall

Grants Writer Neal Brilliant

Director of Major Gifts..... Mary Angelo

Manager of Individual Giving..... Maggie Greene

Manager of Development Operations &

Special Funding Jennifer Ramon-Troxel

Development Associate,

LCT Angels & Special Events.....Angélica Vicens

Institutional Giving Associate Leah Maddire

Development Associate/

Individual Giving Caitlin Christensen

Development Associate..... Sarah Marlin

Development Intern Joe Reece

FINANCE

Controller..... Mala Mosher

Finance Assistant Yaftza Rivera-Jiménez

DIRECTOR OF MARKETINGLINDA MASON ROSS

Associate Director of Marketing Julia Stevens

Digital Marketing Manager Jenny Loeffler

Marketing Assistant Mimi Rios

HILTZ DIRECTOR OF EDUCATION.....KATI KOERNER

Associate Director of Education. Alexandra López

Director, Learning English &

Drama Project..... Chris Heller

Education AssistantHannah Rapaport-Stein

DIRECTOR OF HUMAN RESOURCES, DIVERSITY,**AND INCLUSION**CHRISTOPHER RUNGGOO**HRDI Associate**.....Cassandra Umaña**DIRECTOR OF****INFORMATION TECHNOLOGY**..... STACY VALENTINE

ARTISTIC STAFF**RESIDENT DIRECTOR**..... LILEANA BLAIN-CRUZ**MERTZ RESIDENT DIRECTOR** BARTLETT SHER**LITERARY MANAGER/****DRAMATURG**JENNA CLARK EMBREY**CASTING DIRECTOR**..... DANIEL SWEE, CSA**MINDICH MUSICAL THEATER****PRODUCER**IRA WEITZMAN**ARTISTIC DIRECTOR/LCT3**.....EVAN CABNET

Artistic Administrator..... Julia Judge

Casting Associate Camille Hickman

LCT3 Associate Artistic Director..... Kaaron Briscoe

HOUSE STAFF**HOUSE MANAGER**RHEBA FLEGELMAN

Production Carpenter William Nagle

Production Electrician..... Bruce Rubin

Production Soundman Charles Shell

Production Properties..... Kyle Barrineau

Production Flyman John Weingart

House Technician..... Josh Staines

Head Usher Margie Blair

Box Office Treasurer Michael Delvecchio

Assistant Treasurer Chris Zameryka

ADVERTISING/MARKETING/SOCIAL**SPOTCO**

Stephen Sosnowski Stacey Lieberman Prince

India Haggins Ian Joseph Avila Jermaine Carroll

Grayson Craddock Quincy Brown Ryan Bloomquist

Gráinne Kelly Molly Stump Nicky Lindeman

Rex Bonomelli Michelle Dimuzio Matt Iacovelli

Matt DiCiero Louis Schermerhorn

Cydney Regus Alison Rhen

Principal Poster Artist..... James McMullan

Counsel Charles H. Googe Jr., Esq.;

Hailey Ferber, Esq.;

and Nicole A. Albano, Esq.

of Paul, Weiss, Rifkind, Wharton & Garrison

Immigration Counsel..... Theodore Ruthizer, Esq.;

Mark D. Koestler, Esq.

of Kramer, Levin, Naftalis & Frankel, LLP

Labor Counsel.....Michael F. McGahan, Esq.
of Epstein, Becker & Green, P.C.
Auditor Frederick Martens, C.P.A.
Lutz & Carr, LLP
Insurance Jennifer Brown
of DeWitt Stern/Risk Strategies
Workers Compensation
Risk Management..... Ross L. Gnesin
of GCG Risk Management, Inc.
Production Photographer..... Marc J. Franklin
Event Photographer Chasi Annexy
Video Services Fresh Produce Productions/
Frank Basile
Journalist-in-Residence Brendan Lemon
Consulting Architect Hugh Hardy/
H3 Hardy Collaboration Architecture
Construction Manager Yorke Construction
Payroll Service..... Castellana Services, Inc.
Merchandising.....Marquee Merchandise, LLC/
Matt Murphy
Lobby Refreshments..... Sweet Hospitality Group

STAFF FOR UNCLE VANYA

COMPANY MANAGER MATTHEW MARKOFF
Associate Company Manager..... Mia Rosenfeld
Associate Director Caitlin Ryan O'Connell
Creative Consultant Ayanna Thompson
Music Supervisor Mikhail Fiksel
Associate Set Designer Brittany Vasta
Associate Costume Designer..... Amanda Gladu
Assistant Lighting
DesignersAlexander Le Vaillant Freer,
Edward Hansen
Associate Sound Designers..... Megan Culley,
Noel Nichols
Moving Lights Programmer Victor Seastone
Hair, Wig and Makeup Designer..... Tommy Kurzman
Assistant Hair, Wig and
Makeup Designer Heather Hardin
Ms. Rose's Wigs..... Nikiya Mathis
Wardrobe Supervisor Margaret Lazenby
Dressers Kathleen Gallagher,
Susie Ghebresillassie,
Barry Hoff, Mark Trezza
Props Supervisor..... Alexander Wylie
Props Assistant.....Olive Barrett
Production Assistant..... Matthew Pezzulich
Assistant to Heidi Schreck Molly Paige
English Concertina Consultant Randy Stein
Music Licensing.....Yolanda Ferraloro/Music Rightz,
Wegawam Music Co.,
Wixen Music Publishing, Inc.
Physical Therapy Neurosport Physical Therapy, Inc.
Fight Director UnkleDave's Fight-House

UNCLE VANYA

Adapted by Heidi Schreck
Working with a literal translation created by
Tatyana Khaikin and Heidi Schreck.

Boris Ignatovich, "Wind," 1948.
Copyright Boris Ignatovich Estate, Moscow.
Courtesy of Nailya Alexander Gallery, New York, NY

CREDITS

Scenery and scenic effects built, painted, electrified and automated by Show Motion, Inc., Milford, Connecticut. Automation and show control by Show Motion, Inc. using the AC³ Computerized Motion Control System. Lighting equipment from PRG Broadway. Sound equipment by Masque Sound. Rain by J&M Special Effects.

Visit www.ict.org.

For groups of 10 or more:
Group Sales Box Office at Broadway.com
1-800-BROADWAY x2
groups.broadway.com



THE ACTORS AND STAGE MANAGERS EMPLOYED IN THIS PRODUCTION ARE MEMBERS OF ACTORS' EQUITY ASSOCIATION, THE UNION OF PROFESSIONAL ACTORS AND STAGE MANAGERS IN THE UNITED STATES. THIS THEATER OPERATES UNDER AN AGREEMENT BETWEEN THE LEAGUE OF RESIDENT THEATRES AND ACTORS' EQUITY ASSOCIATION, THE UNION OF PROFESSIONAL ACTORS AND STAGE MANAGERS IN THE UNITED STATES.



ATPAM, the Association of Theatrical Press Agents & Managers (IATSE Local 18032), represents the Press Agents, Company Managers and House Managers employed on this production.



The Director is a member of the STAGE DIRECTORS AND CHOREOGRAPHERS SOCIETY, a national theatrical labor union.



Backstage and Front of the House Employees are represented by the International Alliance of Theatrical Stage Employees (or I.A.T.S.E.).



United Scenic Artists • Local USA 829
of the I.A.T.S.E. represents
the Designers & Scenic Artists
for the American Theatre

WARNING

The photographing or sound recording of any performance or the possession of any device for such photographing or sound recording inside this theatre, without the written permission of the management, is prohibited by law. Violators may be punished by ejection and violations may render the offender liable for money damages.

FIRE NOTICE: The exit indicated by a red light and sign nearest to the seat you occupy is the shortest route to the street. In the event of fire or other emergency please do not run—**WALK TO THAT EXIT.** Thoughtless persons annoy patrons and endanger the safety of others by lighting matches or smoking in prohibited areas during the performances and intermissions. This violates a city ordinance and is punishable by law.

FIRE COMMISSIONER

YOU BELONG AT LINCOLN CENTER THEATER

Since the very inception of the art form, theaters have served as meaningful gathering places – communal havens where emotion and ideas intertwine, creating tapestries of shared experiences. It is my sincere hope that Lincoln Center Theater serves as such a place for you.

Within these walls, stories unfold that touch the deepest parts of us – inviting us to laugh, cry, reflect and empathize. Theater is a live, ephemeral experience that is more vital now than ever, and this special alchemy would not exist without you, our audience.

If you have joined us at Lincoln Center Theater before, welcome back. We thank you for being a part of our family and for your trust in us to deliver exceptional theatrical experiences.

If you are new to Lincoln Center Theater, we offer you a heartfelt welcome. I hope that you will find inspiration, connection and a sense of community here in our theaters. Our doors are always open to you and we look forward to your next visit.

Enjoy the show!



André Bishop

PRODUCING ARTISTIC DIRECTOR

**LINCOLN CENTER THEATER OPENS
WITH GREGORY MOSHER, DIRECTOR
AND BERNARD GERSTEN,
EXECUTIVE PRODUCER**

**THE HOUSE OF BLUE LEAVES MOVES UPSTAIRS FROM
THE NEWHOUSE TO REOPEN THE BEAUMONT**

1985

*Prairie du Chien/
The Shawl*

Swoosie Kurtz,
John Mahoney



1986

*The House of Blue Leaves
Juggling and Cheap Theatrics
Sex & Death to the Age 14
Swimming to Cambodia
Terrors of Pleasure*

*The Woza Afrika! Festival: Asinamali, Bophe!,
Children of Asazi/Gangsters, Born in the R.S.A.*

1987

*The Transposed Heads
The Front Page
Bodies, Rest and Motion*

*Danger: Memory!
Death and the King's
Horseman*

*The Regard of Flight
The Comedy of Errors
Anything Goes
Sarafina!*

*National Theatre
of the Deaf*

BOARD OF DIRECTORS

Kewsong Lee, *Chair*

David F. Solomon, *President*

Jonathan Zubrow Cohen, Jane Lisman Katz, Robert Pohly and John W. Rowe, *Vice Chairs*

James-Keith Brown, *Chair, Executive Committee*

Marlene Hess, *Treasurer*

Brooke Garber Neidich, *Secretary*

André Bishop, *Producing Artistic Director*

Annette Tapert Allen

Allison M. Blinken

Judith Byrd

H. Rodgin Cohen

Ida Cole

Ide Dangoor

Shari Eberts

Curtland E. Fields

Dr. Henry Louis Gates, Jr.

Cathy Barancik Graham

David J. Greenwald

J. Tomilson Hill, *Chair Emeritus*

Judith Hiltz

Sandra H. Hoffman

Linda LeRoy Janklow, *Chair Emeritus*

Raymond Joabar

Mitch Julis

Eric Kuhn

Betsy Kenny Lack

Phyllis Mailman

Ellen R. Marram

Scott M. Mills

Eric M. Mindich, *Chair Emeritus*

John Morning

Elyse Newhouse

Rusty O'Kelley

Andrew J. Peck

Bruce Rosenblum

Stephanie Shuman

Laura Speyer

Maria Tash

Electra Toub

Leonard Tow, *Vice Chair*

Emeritus

Tracey T. Travis

Kara Unterberg

Stellene Volandes

David Warren

William D. Zabel, *Vice Chair*

Emeritus

John B. Beinecke, *Chair Emeritus*, Constance L. Clapp, Ellen Katz, Memrie M. Lewis, Augustus K. Oliver, Victor H. Palmieri, Elihu Rose and Daryl Roth, *Honorary Trustees*

Hon. John V. Lindsay, *Founding Chair*

Bernard Gersten, *Founding Executive Producer*

In Loving Memory

Mrs. Leonard Block, John S. Chalsty, Schuyler G. Chapin, Anna E. Crouse, Joan Straus Cullman, Donald G. Drapkin, Edith K. Ehrman, Bernard Gersten, Beverly Sills Greenough, Andrew Heiskell, Ray Larsen, Hon. John V. Lindsay, Robert E. Linton, Susan Newhouse, Elizabeth Peters, Mrs. John D. Rockefeller 3rd, Lewis Rudin, Lowell M. Schulman, John C. Whitehead, Robert G. Wilmers

Lincoln Center Theater gratefully acknowledges the generosity of the Lila Acheson & DeWitt Wallace Endowment Fund. Lincoln Center Theater is deeply appreciative of the Estate of Amber Lightfoot Walker for establishing The Christopher Lightfoot Walker Literary Fund at LCT. The induction loop assistive listening systems in the Vivian Beaumont Theater, the Mitzi E. Newhouse Theater and the Claire Tow Theater are funded by Shari and Ken Eberts.

Lincoln Center Theater's programs are made possible by the New York State Council on the Arts with the support of the Office of the Governor and the New York State Legislature.

**LCT WINS ITS FIRST TONY AWARD FOR
THE REVIVAL OF ANYTHING GOES
WITH PATTI LUPONE**



Patti
LuPone

1988
Boys' Life
Speed-The-Plow
I'll Go On
Road
Waiting for Godot
Our Town

1989
Measure for Measure
Ubu
Oh, Hell
The Tenth Man

Stockard Channing, James McDaniel,
John Cunningham

**STOCKARD CHANNING
CONNECTS US WITH THE
CONCEPT OF SIX DEGREES
OF SEPARATION**

1990
Some Americans Abroad
Six Degrees of Separation
Monster in a Box
Township Fever



LINCOLN CENTER THEATER GRATEFULLY ACKNOWLEDGES THESE DONORS WHO SUPPORT THE THEATER WITH GENEROUS CONTRIBUTIONS TO OUR ANNUAL FUND AND SPECIAL EVENTS.

CHAIRMAN'S CIRCLE

\$200,000+

Blomberg Philanthropies
The Judith Champion Charitable Fund
and Mel Litoff
Judy and Will Hiltz
The Jerome L. Greene Foundation
Jane Lisman Katz

Kewsong Lee
Lincoln Center Corporate Fund
The Ambrose Monell Foundation
Brooke Garber Neidich and
Daniel Neidich
Samuel I. Newhouse Foundation

Lynne and Richard Pascualano
Daryl and Steven Roth
Sarah Long and David Solomon
The Harold and Mimi Steinberg
Charitable Trust

PRISIDENT'S CIRCLE

\$100,000+

Anonymous (1)
American Airlines
American Express
C. Graham Berwind, III, Chairman -
Creative Partners Productions
Allison M. Blinken
James-Keith Brown and
Eric Diefenbach
Barbara and H. Rodgin Cohen
Douglas S. Cramer, Jr. Revocable Trust
Jonathan Zubrow Cohen and
Julia Pershan
Ida Cole

Ide and David Dangoor
Shari and Ken Eberts
Louis Feil Charitable Trust
Katherine Farley and Jerry I. Speyer
Howard Gilman Foundation
The Horace W. Goldsmith Foundation
Cathy B. Graham
Beth and David Greenwald
Marlene Hess and James D. Zirin
J. Tomilson Hill
Sandra and Howard Hoffen
The Julis Romo Rabinowitz Family
Bruce and Lori Laitman Rosenblum

The Blanche and Irving Laurie
Foundation
LuEsther T. Mertz Charitable Trust
Stacey and Eric Mindich
Robert Pohly and Julie Turaj
Dr. and Mrs. John W. Rowe
The Shubert Foundation
Stephanie and Fred Shuman
Denise Littlefield Sobel
Leonard Tow/The Tow Foundation

DIRECTOR'S CIRCLE

\$75,000+

Mr. and Mrs. Joseph Allen
Judy Gordon Cox
Laurents/Hatcher Foundation
The Frederick Loewe Foundation

Michael Kors and Lance Le Pere
Ninah Lynne
Rusty O'Kelley
Hilary and Andrew Peck

The Fan Fox and Leslie R.
Samuels Foundation

DESIGNER'S CIRCLE

\$50,000+

Blanchette Hooker Rockefeller Fund
Charina Endowment Fund
Gilman & Gonzalez-Falla Arts
Foundation
Celso M. Gonzalez-Falla
Sidney Garber Jewelers
The DuBose and Dorothy Heyward
Memorial Fund

Linda LeRoy Janklow
Raymond Joabar
The JPB Foundation
The Arthur Loeb Foundation
Gregory Maguire
Phyllis Mailman
SHS Foundation
Peter Soros and Electra Toub

Tracey T. Travis
David Warren

**ANDRÉ BISHOP IS NAMED THE
NEW ARTISTIC DIRECTOR OF LCT**

1991

Mule Bone
Mr. Gogol and Mr. Preen
Two Shakespearean Actors

Madeline Kahn,
Jane Alexander,
Frances McDormand



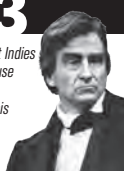
1992

The Most Happy Fella
The Substance of Fire
Four Baboons Adoring the Sun
The Sisters Rosensweig
My Favorite Year

1993

Playboy of the West Indies
In The Summer House
The Lights
Abe Lincoln in Illinois
Gray's Anatomy
Hello Again

Sam Waterston



PRODUCER'S CIRCLE

\$25,000+

Anonymous (2)
adidas

Eleanor M. Alger
Cornelia T. Bailey Foundation
John and Gaily Beinecke/
The Prospect Hill Foundation
The Block Friedman Family Foundation
Robert and Debra Chavez
Constance L. Clapp
Betsy Cohn
Creative Artists Agency
The Endeavor Foundation
Curtland E. Fields

Mark Gallogly and Lise Strickler
The Gladys Kriebel Delmas
Foundation
Sandra Gluck
Ellen and Howard C. Katz
Marie-Josée and Henry R. Kravis
Foundation
Ellen R. Marram
Newman's Own Foundation
Henry Nias Foundation
Paul Weiss Rifkind Wharton and
Garrison LLP

The Laura Pels International
Foundation for Theater
George Petrocheilos
The Rosenthal Family Foundation
Janet Ross
The Ted and Mary Jo Shen
Charitable Gift Fund
Maria Tash
Tiger Baron Foundation
Jean-Georges Vongerichten
Winston Foundation

PLAYWRIGHT'S CIRCLE

\$15,000+

Anonymous (1)
Joseph and Joan Cullman
Foundation for the Arts
Peggy and Dick Danziger
Erin and Peter H. Friedland*#
Louise Grunwald
Marta Heflin Foundation
Corrina Jones
FM. Kirby Foundation
Suzie and Bruce Kovner

Betsy Kenny Lack
Gina Maria Leonetti
Stephanie and Carter McClelland
John Morning
Charles Stewart Mott Foundation
Elihu and Susan Rose
May and Samuel Rudin Family
Foundation, Inc.
Ted Snowdon/The Snowdon
Foundation

In Memory of Roy Taimo
Michael Tuch Foundation
Family of Bob Ullman, longtime
Broadway press representative
Theodore and Renee Weiler
Foundation
Nina W. Werblow Charitable Trust
Lucille Werlinich

BENEFACTOR

\$10,000+

Anonymous (4)
Judy Hart Angelo
Jody and John Arnhold
Bedell Cellars
Jill and John Chalsty
David J. Cohen
Barbara Bell Cumming Charitable
Trust
Maria Eagan
Anne and Joel Ehrenkranz
Dasha A. Epstein for the Jack and
Mimi Amsterdam Foundation
Everett Foundation
Claire and John Flynn*#
James Gleick and Cynthia Crossen

Barbara and Peter Georgescu
Paul and Diane Guenther
Mimi and Peter Haas Fund
David C. Horn Foundation
Florence Kaufman
Judith and Douglas Krupp
Mitchell Kurtz, in memory of
Lillian Kurtz
Jeanette Lerman-Neubauer
and Joseph Neubauer
Leon Levy Foundation
Judith Plows
Abigail Pogrebin and
David P. Shapiro
Takako Richards

Ricki Roer
Wendy B. Samuel
Irwin S. Scherzer Foundation
Lisa and David Schiff
Risa Schwartz
Scripps Family Fund for Education
and the Arts
Kara Unterberg
Lucy and Anthony Wang
Gabriel Wiesenthal and
Marcia Kaplan-Mann
The Winokur Family Foundation

**AUDRA McDONALD MAKES HER
BROADWAY DEBUT IN CAROUSEL**

**CHERRY JONES LIGHTS UP
THE STAGE AS THE HEIRESS**

1994

Rodgers & Hammerstein's Carousel
subUrbia
Hapgood

Audra McDonald



1995

The Heiress
Arcadia
Twelve Dreams
Chronicle of a Death
Foretold
Northeast Local
Racing Demon

Cherry Jones



1996

A Fair Country
A Delicate Balance
Sex and Longing
It's a Slippery Slope
Juan Darién

SPONSOR

\$7,500+

Anonymous (1)
Babbitt Family Charitable Trust
Aashish and Dinny Devitre
William W. Donnell
Margot E. Freedman
Russel T. Hamilton, Jr.
Eric Kuhn

Bill and Sheila Lambert
Dalia and Laurence Leeds Family
Foundation
Rosanne and Marty Leshner
Karen Mandelbaum
Peter Mensch
Paula and Ira Resnick

Karen and Gary Rose
The Silverweed Foundation
SpotCo
Laurie and Phil Sprayregen
Susan and David Viniar
Robin and Leigh Walters

SUPPORTING

\$5,000+

Anonymous (1)
Carolyn and Laurence Belfer
Mark and Randy Belnick
Sandra and Harvey Benenson
Jody Locker Berger
Leon and Debra Black
Geoffrey C. Bible
Janel Anderberg Callon
Mrs. Judith Chasanoff
Mary Cirillo-Goldberg
Noël Coward Foundation
Mr. and Mrs. Jack David
Sharon S. Davis Foundation
Jeanne Donovan Fisher
Elizabeth and Michael Fascitelli
Cynthia and Herbert Fields
David Fink and Simon Kinsella
Herman Goldman Foundation
Ellen and Robert Grimes
The Grodzins Fund
Audrey and Martin Gruss
Anuj Gupta

Francena T. Harrison Foundation
Trust
Anita K. Hersh
Anita Highton, M.D.
J.C.C. Fund
Weslie and William Janeway
Susan B. Kaplan, Nancy and
Mark Belsky
Sharon Karmazin
Ashley Leeds and
Christopher M. Harland
Memrie M. Lewis
Stephen Malamud
Sarah and John McGinty
John Mellor
Liz and Gus Oliver
F. Richard Pappas and
Adrienne Rivers
Geri Pollack
Diana and Bruce Rauner
Marcia N. Riklis
The Rodgers and Hammerstein
Foundation

Kenneth and Merideth Rosh
Judith O. Rubin
Frances Schultz
Dr. and Mrs. Andrew Shiva
Jolyon Stern/Risk Strategies
Company, Inc.
Howard and Michelle Swarzman
Henry O. Timnick
Laurie M. Tisch
Michele Tortorelli and
Thomas D. Kearns
Diane and Tom Tuft
Beth Uffner and Robert Goldfarb
Esme Udsan and James Snyder
Jan and Cynthia van Eck
The Rudolph and Lentilhon
von Fluegge Foundation, Inc.
Susan and Kenneth Wallach
Carl Weisbrod and
Honorable Jody Adams
Kenneth L. Wyse

PATRON

\$2,500+

Anonymous (23)
Pamela Y. Abner
Karen and Ed Adler
Alexandra Alger and Dan Chung
Lawrence Arnstein and Bobbi Rudd
Frances C. Ashley
Page Ashley
Amy Attas and Stephen Shapiro
Karin and Henry Barkhorn
Christine Bassett and
Carey Alexander

Susan Beckerman
Candace and Rick Beinecke
Renee and Robert Belfer
Sol and Margaret Berger Foundation
Stacy Bernstein
Dr. Stephen Bates Billick
Genie Birch
Jill and John C. Bishop, Jr.
Nancy L. Blank, Jr.
Ruth and Robi Blumenstein
Margot and Jeremiah Bogert

Carol and Robert Braun
Edward A. Brill
Noreen and Kenneth Buckfire
Aviva and Martin Budd
Ruth Anna Carlson and
Albert Leonetti
Linda and Arthur Carter
Cathy Chernoff
Betty Chin
Gail and Bruce Chizen
Suzanne and Bob Cochran

HELEN HUNT DIPS HER TOES IN THE BEAUMONT POOL (LITERALLY) IN *TWELFTH NIGHT*

1997

God's Heart
An American Daughter
The Little Foxes
Ivanov
Pride's Crossing

Helen Hunt



1998

Ah, Wilderness!
A New Brain
Twelfth Night
Parade
Far East



Brent Carver,
Carolee Carmello

PATRON CONTINUED

Susan and Bruce Cohen
 Joan D. Corey
 Abby and Andrew Crisses
 Ellie and Edgar M. Cullman, Jr.
 Mr. Timothy Curtis and
 Mr. Shandon Youngclaus
 Mrs. Norma A. Dana
 Dr. and Mrs. Mitchell Davich
 Della and Sam Dekay
 Jennie L. and Richard K. DeScherer
 David desJardins
 Ann Dichter and Kevin Pegram
 Karen and Bob Dinerstein
 Christopher and Barbara Dixon
 Chris Drury and Jill Taub Drury
 Brenda Earl
 Susan and David Edelstein
 Fred and Suzan Ehrman
 Judith Entes
 Fiona and Harvey Fein
 Rachel S. Fleishman
 Michael J. and Jill R. Franco
 Peter and Julie Gale
 Barbara Gallay
 Alice Gantcher
 Alice and Bruce Geismar
 Melissa M. Gibbs
 Mr. Michael Glick and
 Dr. Sharon Albers Glick
 Arne and Milly Glimcher
 Maya and Larry Goldschmidt
 Gary and Susan Goodman
 Howard and Deborah Goodman
 Liz and Irwin Gottlieb
 Phyllis Green and Randy Cowen
 Marilyn Greenspan
 Jeffrey and Paula Gural
 John Hardiman
 Patricia G. Hambrecht
 Lynne and Harold Handler
 Louise Hartwell
 Harvey A. Heffner and Lee Berg
 John Herrick
 Anne and John Herrmann
 Fred Hochberg and Tom Healy
 David Hodes and Jolie Schwab
 Willa and Larry Hoffner
 Pamela Howard
 Ruth L. Hutter

Marjorie A. Hyman
 Ilberman Family Philanthropic Fund
 Alan Ilberman and
 Caroline Golden Ilberman
 Martin and Judy Isserlis
 Ann Blumenthal Jacobs
 Sherry Jacobson and Eugene Zuriff
 Annette Jaffe
 Ira Kaltman
 Barbara and Steven Karpf
 Katz Family Foundation
 Amy L. Katz and Irving Scher
 Anne Keating
 Ellen Kelson
 Susan Petersen Kennedy
 Elaine and Mark Kessel
 David L. Klein, Jr. Foundation
 John and Patricia Klingenstein
 Coco and Arie L. Kopelman
 Alan and Gail Koss
 Kranzdorf Family Foundation
 Arnold and Roberta Krumholz
 David and Candy Kultgen
 Ingrid and Nicholas Lamia
 Mark and Patricia Lampl
 Barbara G. Landau
 Stacey R. Lane
 Lasdon Family Foundation
 Cynthia Leder
 Linda and Jerry Levin
 Frank and Amy Linde
 Linda Lindenbaum
 Andrea and Jeffrey L. Lomasky
 Anna and Kyle Loneragan
 William E. Low
 Andrea and Matthew Lustig
 Podie Lynch
 Linda F. Lynn
 Richard Lynn and Joseph Evall
 Jane and Bill Macan
 Mr. and Mrs. Peter L. Malkin
 Reva D. Mandelbaum
 Lynn and Elizabeth Mangum
 Susan and Morris Mark
 James C. Marlas and
 Marie Nugent-Head Marlas
 Margery and Edgar Masinter

Barbara Marcus and Michael Pollack
 Mr. and Mrs. Richard Marston
 Nina Matis
 Wendy and Jeff Maurer
 Israel Meir and Steve Rivera
 Josie Merck
 Ruth Messinger and
 Andrew Lachman
 Pamela Miles
 Cheryl and Michael Minikes
 Gail Monaghan
 Mary and Garrett Moran
 Mr. and Mrs. Lester S. Morse, Jr.
 Charles and Susan Calhoun Moss
 Robert and Guna Mundheim
 Nicolas Nagler and
 David Alberto Alvarez
 Sheila Nevins
 Stanley Newman and
 Dr. Brian Rosenthal
 Melanie and David Niemiec
 Larry and Rachel Norton
 John C. and Nancy G. Novogrod
 Marne Obernauer and
 Jane Michaels
 Dr. and Mrs. Peter M. Odell
 Kathleen O'Grady
 Lisa Orberg
 Shelly Packer
 Nicole and Bruce Paisner
 Michael and Gabrielle Palitz
 Steve and Diane Parrish
 The Peckham Family Foundation
 Liz and Jeff Peek
 Mindy Pollack
 Jane H. Poole
 Lisa Farber Post and
 Dr. Kalmon D. Post
 Steven and Naomi Press
 Kim and Bill Pressman
 Gail Propp
 Susan and Peter Ralston
 Barbara Raynor
 Denise H. Rein
 Stacy# and Samuel* Reilly
 Richard Reiss
 Richenthal Foundation
 Carol Roaman
 Judy Robins

CONTACT WINS 4 TONY AWARDS INCLUDING BEST MUSICAL

1999

Via Dolorosa
Ancestral Voices
Ring Round the Moon
Contact
Marie Christine
Morning, Noon and Night



Boyd Gaines,
 Deborah Yates

2000

The Time of the Cuckoo
Rose
Spinning Into Butter
Patti LuPone: Matters of the Heart
Old Money

PATRON CONTINUED

Gerald and Laura Rosberg
 Adam R. Rose and
 Peter R. McQuillan
 Esther H. Rose
 Mr. and Mrs. Benjamin M. Rosen
 Marjorie and Jeffrey Rosen
 Elizabeth Rosenman
 E. Robert Roskind
 Mr. and Mrs. William Rosoff
 Patricia Rowell and Ron Becker
 William Rubenstein and Lorinda Ash
 Suzanne Rubin
 Rachel Rush and Andrew Rejan
 Mrs. Bonnie J. Sacerdote
 Joshua Safran
 Christie C. Salomon
 Mary Sano and Jon Taylor
 Gail Robin Sarnier
 Allison B. Saxe
 Sanford J. Schlesinger and
 Lianne Lazetera
 June and Paul Schorr

Dr. Robert and Janie Schwalbe
 Betsey and Arthur Selkowitz
 Julie S. Seymour
 Nazgol Saati Shahbazi
 Myra and Harold Shapiro
 Nancy Shapiro
 Beverly and Arthur Shorin
 John Siffert and Goldie Alfasi-Siffert
 Adrienne and William Silver
 Daisy M. Soros
 Madeline and William Speer
 Lois and Arthur Stainman
 Sarah Steinberg
 Bonnie and Tom Strauss
 Mr. and Mrs. David Strauss
 Judith H. Tanenbaum, M.D.
 and William A. Tanenbaum
 Tracy Tang
 Barbara Tarmy
 Barbara Tober
 Carol Tolan
 Coleman and Susan Townsend

Jean Troubh
 Yolanda R. Turocy
 Barry Waldorf and Stanley Gotlin
 Marian M. Warden
 Ken and Rita Warner
 The Wechsler Foundation
 Sandra and George Weiksner
 Frank and Denie Weil
 Cathy and Stephen Weinroth
 Daniel Weiss
 Neil Westreich
 Gail and Ranan Wichler
 Susan and Bart Winokur
 Dr. Matthew R. Witten
 Betsy and Cliff Wolf
 Lisa and David Wolf
 Judy Francis Zankel and
 Norman S. Benzaquen
 Barbara and Michael Zimmerman
 Audrey Y. Zucker

ASSOCIATES AND ANGELS

\$1,000+

Anonymous (3)
 Natalie Affinito
 Arlene Blau
 David Blum and Terri Minsky
 Joel and Lorraine Brown
 Justin E. Campbell*
 Robert Cohn
 Paul and Caroline Cronson
 Alexander R. Donnelly*#
 Erika Feil-Lincoln* and
 Matthew Lincoln#
 Jessica Ferreira*#
 Melissa Ferrer
 Mary Hays
 Nancy Heller
 Marilla Hiltz Vaszarehlyi*#
 Erica Hyman*
 Joy H. Ingham
 Jana Foundation
 Helen Kay *

Brandon Kenney# and
 Rachael Patterson*
 Gauri Khurana, MD, MPH*
 Justin Kirk
 Ram Koppaka
 Michael Kurtz
 Alison and Jared Larsen*
 Paul and Florence Rowe Libin
 Michelle Mains
 Francis J. McGrath
 Margaret Monaco
 Mallory Neidich and Ted Kalborg*
 Denis O'Connor
 Carol Ostrow and Michael Graff
 Amanda Pekoe# and
 Christopher Lueck*
 Margaret E. Pennoyer*
 Robbie and Polly Pennoyer*#
 Richard and Rose Petrocelli
 Judy and Jim Pohlman

Ashley Pollak*
 Andrew Porte
 Peggy Pressman
 Lauren Rackow# and
 Christopher Tuffin*
 Susan and Victor Restler
 Susan and Peter Shedlin
 Steven Scheinfeld
 Alexandra Shiva
 William Short
 Drew and Kimberly Skelton*
 Calvin Solomon*
 Janet and Gil Spitzer
 Henry O. Timnick
 Heather A. Viets*#
 Stacy Michelle Valentine
 Margie and Bryan Weingarten
 Francis H. Williams
 Sara Beth Zivitz*#
 Walter Williamson and Karen Zier

*Member of LCT Angels

#Member of LCT Angels Steering Committee

As of February 21, 2024

ROGER REES AND STEVEN PASQUALE TRANSPORT US TO 1964 DUBLIN IN A MAN OF NO IMPORTANCE

2001

Ten Unknowns
The Invention of Love
Chaucer in Rome
Thou Shalt Not
Everett Beekin

"QED"

Barbara Cook:
Mostly Sandheim



Roger Rees,
 Steven Pasquale

2002

The Carpetbagger's Children
Morning's at Seven
A Man of No Importance
Dinner at Eight

BECOME A PATRON AT LCT

Each level of the Patron Program offers unique benefits such as complimentary tickets, invitations to Opening Night performances, *Playbill* listing, access to exclusive events, and so much more!

With gifts starting at \$1,000, you'll witness our productions from the best seats in the house every time knowing your support brings life to our stages. What are you waiting for?



Photo by Chasi Annexy

To view a comprehensive list of all giving levels and benefits, visit www.lct.org/support/patron.

To join, contact the Patron office at (212) 501-3252 or patrons@lct.org. Or scan the QR Code.



LINCOLN CENTER THEATER PATRON COMMITTEE

Co-Chairs Daryl Roth · Ide Dangoor · Ninah Lynne

Allison M. Blinken

Margot E. Freedman

Barbara Anne Georgescu

Linda LeRoy Janklow

Ellen Katz

Memrie M. Lewis

Elyse Newhouse

Ricki Roer

Lisa Schiff

Electra Toub

Tracey T. Travis

Founding Chair

Joan Straus Cullman

LCT's Patron Program is supported by American Airlines

KEVIN KLINE RAISES THE BAR AND MANY A GLASS IN OUR TONY-WINNING REVIVAL OF HENRY IV

THE LIGHT IN THE PIAZZA GIVES VICTORIA CLARK HER FIRST TONY

2003

Observe the Sons of Ulster Marching Towards the Somme
Vincent in Brixton
Elegies: A Song Cycle
A Bad Friend
Henry IV
Nothing But the Truth



Kevin Kline

2004

Big Bill
King Lear
Barbara Cook's Broadway
The Frogs
Belle Epoque
The Rivals

2005

Dessa Rose
The Light in the Piazza
Brian Stokes Mitchell: Love/Life
Third
Edward Albee's Seascape



Victoria Clark

BECOME AN LCT ANGEL

Join LCT's young donor group (age 21 – 44) and receive exclusive VIP benefits including complimentary tickets, invitations to fun parties and behind-the-scenes events, no-fee ticket service, and more!

Memberships start at \$250! To learn more, contact Angelica Vicens at vicens@lct.org or (212) 501-3292. Or visit us online at lct.org/angels.



Photo by Chasi Annexy

LCT Angels with director Tyne Rafaeli and playwright Sylvia Khoury at an LCT Angels Party.

The LCT Angels program is supported by American Airlines

**THE COAST OF UTOPIA TRILOGY
SETS SAIL AT THE BEAUMONT
AND DOCKS WITH 7 TONYS**

2006

*Bernarda Alba
Awake and Sing!
The House in Town
The Clean House
The Coast of Utopia: Voyage,
Shipwreck, Salvage*



**BARTLETT SHER, NOW A RESIDENT
DIRECTOR OF LCT, REVIVES SOUTH
PACIFIC TO THE TUNE OF 7 TONYS**

2007 2008

*Dying City
The Glorious Ones
Rock 'N' Roll
Cymbeline*

Ethan Hawke,
Richard Easton

*Rodgers & Hammerstein's South Pacific
The New Century
John Lithgow: Stories by Heart
Clay
Saturn Returns
Dividing the Estate*

Paulo Szot



OPEN STAGES EDUCATION PROGRAM



Photo by Tricia Baron

Andrew Burnap and cast members of *CAMELOT*.

Every year, Lincoln Center Theater's Open Stages education program welcomes thousands of New York City public school students to our shows at no cost. For many students, it means a first visit to the theater, transforming young people into new theater patrons and the theater into a community space. Students engage with the production's history and themes during pre-show workshops and then experience a post-performance talk-back with the company.

"I loved how I was given this amazing opportunity to watch *CAMELOT*... It was a very memorable and unforgettable experience that I will always be grateful for." - New York City Public School Student

GENEROUS SUPPORT FOR OPEN STAGES IS PROVIDED BY:

American Express

Cornelia T. Bailey Foundation

Allison M. Blinken

Joan D. Corey

Noël Coward Foundation

Barbara Bell Cumming Charitable Trust

Shari and Ken Eberts

The Endeavor Foundation

Marta Heflin Foundation

Judith and Will Hiltz

Jana Foundation

The JPB Foundation

The Julis Romo Rabinowitz Family

Jane Lisman Katz

LCT Friends' Gifts for Education

The Frederick Loewe Foundation

Newman's Own Foundation

John Beinecke/Prospect Hill Foundation

Scripps Family Fund for Education and the Arts

Stephanie and Fred Shuman

Tiger Baron Foundation

Michael Tuch Foundation

Turrell Fund/Curtland E. Fields

Turrell Fund/John Morning

The Winokur Family Foundation

LCT's Open Stages education program is supported in part with public funds from the New York City Department of Cultural Affairs, in partnership with the New York City Council. Special thanks to New York City Council Members Gale A. Brewer and Carlina Rivera.

To make a gift in support of Open Stages, please contact Jennifer Ramon-Troxel at ramon@lct.org or (212) 501-3278.

LCT CELEBRATES ITS
25TH ANNIVERSARY

LCT LAUNCHES
LINCTIX FOR
21-35 YEAR OLDS

2009

Happiness
August Wilson's Joe Turners
Come and Gone
Stunning
Broke-ology
In the Next Room or the vibrator play
What Once We Felt

Roger Robinson



2010

When the Rain Stops Falling *Other Desert Cities*
Graceland
The Grand Manner
On the Levee
Women on the Verge of a Nervous Breakdown
A Free Man of Color
The Coward

2011

When I Come to Die
War Horse
A Minister's Wife
4000 Miles
All-American
Blood and Gifts

THE VIVIAN BEAUMONT SOCIETY

Ensure that Lincoln Center Theater's productions inspire generations to come by joining the Vivian Beaumont Society. Make an enduring impact on artists and audiences by including LCT in your estate planning. In appreciation of their forward-thinking commitment, Vivian Beaumont Society members are invited to annual behind-the-scenes events and receive recognition in *Playbill*.

For more information on making a planned gift to Lincoln Center Theater and joining the Vivian Beaumont Society, please contact Jennifer Ramon-Troxel at ramon@lct.org or (212) 501-3278.



Photo by Francis Dzikowski/Esto

VIVIAN BEAUMONT SOCIETY MEMBERS

Anonymous (2)
 Vivian Beaumont Allen*
 Marcia Beckerman*
 Anne L. Bernstein*
 Robert J. Blinken*
 Adele G. Block*
 Leonard Block*
 Carol and Robert Braun
 J. Leslie Burgin
 The Judith Champion Charitable Fund*
 Robert Cohn
 Ida Cole
 Douglas S. Cramer*
 Anna E. Crouse*
 Joan Straus Cullman*

Joseph F. Cullman 3rd*
 Edith K. Ehrman*
 Lois Farber
 Seymour Geller
 Eileen M. Gleimer
 Patricia Hurley Goodrich*
 Judith Beryl Grebin
 Andrew Heiskell*
 Renee and Edgar Jackson*
 Elaine K. Jacobs*
 Bruce J. Karp
 Ellen Katz
 Ann J. Kugel
 Adam LeGrant*
 Catherine Lomuscio
 Maryann and Ray Larsen*

Mary Lindsay*
 LuEsther T. Mertz*
 Patrick and Dot Morgan
 Howard Morse*
 Murray L. Nathan*
 Arthur Ross*
 Lowell M. Schulman*
 Howard Sloan*
 Richard Steadman*
 Stephen Stempler*
 Robert Stern*
 Henry O. Timnick
 Adam Weisler
 Arthur N. Wiener*
 Lois Wyse*

*In Memoriam

**THE CLAIRE TOW THEATER,
 HOME OF LCT3, OPENS ON
 THE BEAUMONT ROOF WITH
 PAIGE EVANS, ARTISTIC DIRECTOR**

**BERNARD GERSTEN RETIRES;
 ANDRÉ BISHOP NAMED
 PRODUCING ARTISTIC DIRECTOR**

<p>2012</p> <p><i>Clybourne Park</i> <i>Slowgirl</i> <i>Young Jean Lee's We're Gonna Die</i> <i>Disgraced</i> <i>Vanya and Sonia and Masha and Spike</i> <i>Golden Boy</i></p> <p>David Hyde Pierce, Kristine Nielsen</p>		<p>2013</p> <p><i>Luck of the Irish</i> <i>Macbeth</i> <i>The Nance</i> <i>Nikolai and the Others</i> <i>Mr. Joy</i> <i>A Kid Like Jake</i> <i>Luce</i> <i>Domesticated</i></p>	<p>2014</p> <p><i>Stop Hitting Yourself</i> <i>The Oldest Boy</i> <i>Act One</i> <i>The City of Conversation</i> <i>Freestyle Love Supreme</i> <i>The Who & The What</i> <i>Disgraced</i> <i>brownsville song (b-side for tray)</i></p>
--	--	---	---

CAPITAL CAMPAIGN DONORS

LINCOLN CENTER THEATER FUND

FOUNDERS 1985-1995

Dedicated to John D. Rockefeller 3rd, Vivian Beaumont Allen and Mitzi E. Newhouse, who founded a permanent theater at Lincoln Center, this fund honors those whose extraordinary generosity has made it possible to reestablish and perpetuate this theater.

The Beaumont Family Fund
The Rockefeller Foundation
The Eleanor Naylor Dana Charitable Trust
Mr. & Mrs. Leonard Block
Lawrence A. Wien
Lila Acheson & DeWitt Wallace Fund for Lincoln Center, established by the founders of Reader's Digest
Mr. & Mrs. John C. Whitehead
Marian & Andrew Heiskell
LuEsther T. Mertz
Laurance S. Rockefeller
The Kresge Foundation
The New York Times Co. Foundation
Mr. & Mrs. Arthur Ross
Mark Goodson In Memory of Susan Stein Shiva
The Harold & Mimi Steinberg Charitable Trust
The Samuel I. Newhouse Foundation

The Ford Foundation
The Fan Fox & Leslie R. Samuels Foundation
Mrs. John D. Rockefeller 3rd
Mr. & Mrs. Leon Hess
Lowell M. Schulman/Dianne Wallace
Victor & Cathryn Palmieri
Sondra Gilman Gonzalez-Falla
Mr. & Mrs. Robert E. Linton
The Andrew W. Mellon Foundation
The Shubert Foundation
Vera G. List
Joan & Joe Cullman
Samuel & May Rudin Foundation
The Skirball Foundation
Lincoln Center for the Performing Arts
Daryl & Steven Roth
The Laura Pels Foundation

CAPITAL CAMPAIGN

2000-2010

Toward the end of the Twentieth Century those listed below generously contributed to the Campaign to renew this building and its two theaters.

Mr. & Mrs. Leonard Block
Joan & Joe Cullman
Linda LeRoy Janklow
Marian & Andrew Heiskell
Vera G. List
Susan & Elihu Rose Foundation
Edith K. Ehrman
The Samuel I. Newhouse Foundation
Norman F. Levy
Sondra Gilman Gonzalez-Falla
The Laura & Isaac Perlmutter Foundation
Josie & Julian H. Robertson, Jr.
Blanchette Hooker Rockefeller Fund

The Rosenkranz Foundation
Mr. & Mrs. John C. Whitehead
The Starr Foundation
LuEsther T. Mertz Charitable Trust
Allison & Robert Blinken
Daryl & Steven Roth
Bernice & Donald Drapkin
The Kresge Foundation
Mr. & Mrs. David C. Clapp
New York City Department of Cultural Affairs
The Council of the City of New York
Maryann & Ray Larsen

KELLI O'HARA WINS THE TONY FOR *THE KING AND I*, HER THIRD LCT MUSICAL

EVAN CABNET IS NAMED ARTISTIC DIRECTOR OF LCT3

OSLO MOVES FROM THE NEWHOUSE TO THE BEAUMONT AND WINS THE TONY FOR BEST PLAY

2015

Verité
The Mystery of Love and Sex
Rodgers & Hammerstein's
The King and I
Preludes
Shows for Days
Kill Floor

Dada Woof Papa Hot
A View from
the Bridge



Kelli O'Hara

2016

Her Requiem
The Royale
Falsettos
War
Oslo
The Harvest
The Babylon Line



2017

The Glass Menagerie
Bull in a China Shop
How to Transcend a
Happy Marriage
Third Rail Projects
Ghost Light

Pipeline
Junk
After the Blast
The Wolves

Jennifer Ehle, Jefferson Mays

TWENTY-FIRST CENTURY BENEFACTORS

2000-2010

The Twenty-First Century Benefactors generously established an endowment for Lincoln Center Theater to assure its continuity in the twenty-first century.

The Samuel I. Newhouse Foundation
The Harold & Mimi Steinberg Charitable Trust
The Peter Jay Sharp Foundation
The Lila Acheson & DeWitt Wallace
Endowment Fund
Adele & Leonard Block
Marian S. Heiskell in memory of Andrew
The Estate of Andrew Heiskell
The Doris Duke Charitable Foundation
Norma & Leon Hess
Phyllis Mailman
Joan & Joseph F. Cullman 3rd
Ellen & Howard C. Katz
Daryl & Steven Roth
Bruce Kovner
Holly & Sam Merrin
The Irene Diamond Fund
Daniel & Joanna S. Rose
Arthur & Janet Ross

The Shubert Foundation
The Jerome L. Greene Foundation
The Skirball Foundation
The Estate of Edith K. Ehrman
The Andrew W. Mellon Foundation
The Prospect Hill Foundation
Mr. & Mrs. Benjamin Rosen
Valerie & John W. Rowe
Janine & J. Tomilson Hill
Jill & John Chalsty
Brooke & Daniel Neidich
Linda & Morton Janklow
Claire & Leonard Tow
Debra & Leon Black
Vivian Milstein
Susan & Elihu Rose
Citi Foundation
Catherine & Ephraim Gildor

CAMPAIGN FOR LCT3

2008-2012

The LCT3 Capital Campaign funded the construction of the Claire Tow Theater and provides endowment and operating funds for LCT3 programming.

Leonard and Claire Tow
Lincoln Center for the Performing Arts, Inc.
Stacey and Eric Mindich
Mr. and Mrs. J. Tomilson Hill
Marlene Hess and James D. Zirin
Dr. and Mrs. John W. Rowe
Phyllis Mailman
Mrs. Leonard Block
John and Gaily Beinecke &
The Prospect Hill Foundation
Kewsong Lee and M. Zita J. Ezpeleta
The Warburg Pincus Foundation
Daryl and Steven Roth
Stephanie and Fred Shuman
Jonathan Z. Cohen and Julia Pershan

The Solomon Family
Linda LeRoy Janklow
Brooke and Daniel Neidich
Susan and Elihu Rose
The Harold and Mimi Steinberg Charitable Trust
Ford Foundation
James-Keith Brown and Eric G. Diefenbach
The Andrew W. Mellon Foundation
Judith and Will Hiltz
Jane Lisman Katz
Allison M. Blinken
Ninah and Michael Lynne
Samuel I. Newhouse Foundation
Blanchette Hooker Rockefeller Fund
Debra and Leon Black

**LILEANA BLAIN-CRUZ
NAMED A RESIDENT
DIRECTOR OF LCT**

2018

queens
Admissions
Lerner & Loewe's My Fair Lady
Pass Over
Shabash!
Plot Points in Our Sexual
Development

The Hard Problem
To Kill A Mockingbird
Throw Me On The Bumpile
and Light Me Up

Harry Hadden-Paton,
Lauren Ambrose



2019

Marys Seacole
Nantucket Sleigh Ride
The Rolling Stone
In the Green
The Sound Inside
Power Strip
Greater Clements



2020

The Headlands
*Spotlight Series**
*Lights! Camera! Theater!**

*virtual
Quincy Tyler Bernstine

CAMPAIGN FOR LCT3 CONTINUED

Katherine G. Farley and
The Speyer Family Foundation
Drapkin Family
Connie and David Clapp
Ellen and Howard C. Katz
Ida Cole
Ellen Marram
Jean L. and Robert A. Stern Foundation
Lowell Schulman and Dianne Wallace
Robert B. Menschel
LuEsther T. Mertz Charitable Trust
Charina Endowment Fund
Time Warner Foundation
The Peter Jay Sharp Foundation
Booth Ferris Foundation

Anne and Joel Ehrenkranz in honor of
Bernard Gersten
Barbara and H. Rodgin Cohen
Elizabeth Peters
Blanche and Irving Laurie Foundation
Tracey T. Travis
Cynthia and John Whitehead
Liz and Gus Oliver
Memrie M. Lewis
Florence and Robert Kaufman
SHS Foundation
Barbara and Howard Sloan
Betsy and Alan D. Cohn
Jill and Irwin B. Cohen

NAME A SEAT!

Make your mark on Lincoln Center Theater by naming a seat!

Starting at \$2,500, this is an unforgettable opportunity to honor a loved one, commemorate an anniversary, or show your own love of theater. With a fully tax-deductible contribution, you can purchase a personalized plaque in either the Vivian Beaumont Theater or Mitzi E. Newhouse Theater and support the thrilling productions onstage. This is an exciting way to leave a lasting legacy on the Lincoln Center campus.

For more information, please contact Jennifer Ramon-Troxel at ramon@lct.org or (212) 501-3278.



GABBY BEANS TAKES CHARGE IN THE SKIN OF OUR TEETH

2021

*Private Reels: From the LCT
Archive**
*The Forbidden City**
Pass Over
Flying Over Sunset

*virtual



Gabby Beans

2022

Intimate Apparel
At the Wedding
Epiphany
The Skin of Our Teeth
The Nosebleed

Becky Nurse of Salem
Ohio State Murders
Your Own Personal
Exegesis

Kearstin Piper Brown,
Justin Austin



2023

The Coast Starlight
Lerner & Loewe's Camelot
NEXT@LCT3
Flex
Let's Call Her Patty
Daphne
The Gardens of Anuncia

CONNECT WITH YOUR FAVORITE SHOWS AND ARTISTS!

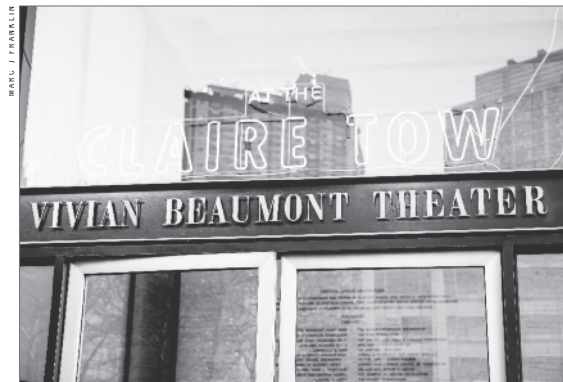
LCT.ORG |      @LCTTheater • #VanyaBWay

Photos by Chasi Amney, Tricia Baron and Christopher Ernst



AT THIS THEATRE: VIVIAN BEAUMONT THEATER

The Vivian Beaumont Theater opened October 21, 1965. The building initially encompassed only the 1,100-seat Vivian Beaumont Theater and the 299-seat Mitzi E. Newhouse Theater, but a third theater, the Claire Tow (named after the wife of longtime LCT Board member Leonard Tow), opened in 2012 on the roof of the Beaumont. The 112-seat theater is the home of LCT3, an initiative to develop new artists and engage new audiences.



Lincoln Center Theater was established in 1985 under the direction of Gregory Mosher and Bernard Gersten. In 1992, André Bishop succeeded Mr. Mosher as Artistic Director. Since Mr. Gersten's retirement in 2013, Mr. Bishop has served as LCT's Producing Artistic Director.

Productions here in the 2010s include *My Fair Lady*, *Junk*, *Oslo*, *Act One*, *The King and I*, *Macbeth*, *War Horse*, and John Guare's *A Free Man of Color*. The first decade of the 21st-century saw audiences enjoying *South Pacific*, *The Coast of Utopia*, *The Light in the Piazza*, *The Rivals*, *The Frogs*, *Henry IV*, *King Lear*, *Dinner at Eight*, *Our Town*, *Contact*, Barbara Cook in *Mostly Sondheim*, and *Q.E.D.* In the 1990s, *Marie Christine*, *Parade*, *Twelfth Night*, *Ivanov*, *Racing Demon*, *Arcadia*, *Carousel*, *Gray's Anatomy*, *Abe Lincoln in Illinois*, *My Favorite Year*, and *Four Baboons Adoring the Sun* all played here. Recent Newhouse shows include *Vanya and Sonia* and *Masha and Spike*, *4000 Miles*, *The New*

Century, *The Glorious Ones*, *The Clean House*, *Third*, *Barbara Cook's Broadway*, *Elegies*, *Sarafina*, *A New Brain*, *A Man of No Importance*, *Hapgood*, *SubUrbia*, *The Sisters Rosensweig*, and *The Substance of Fire*.

From 1985 to 1992, Beaumont productions included *Six Degrees of Separation*, *Monster in a Box*, *Some Americans Abroad*, *The Tenth Man*, *Anything Goes*, *The Comedy of Errors*, *The Regard of Flight*, *Death and the King's Horseman*, *Waiting for Godot*, *The Front Page*, and *The House of Blue Leaves*.

LCT's Newhouse program from 1985 to 1992 included *Mr. Gogol* and *Mr. Preen*; *Oh, Hell*; *Ubu*; *Measure for Measure*; *Waiting for Godot*; *I'll Go On*; *Boys' Life*; *Sarafina!*; *Danger: Memory*; *Bodies, Rest, and Motion*; *The Transposed Heads*; *Terrors of Pleasure*; *The Flying Karamazov Brothers*; and *Prairie du Chien & The Shawl*.

The Beaumont has had several prior managements and some periods of inactivity. From

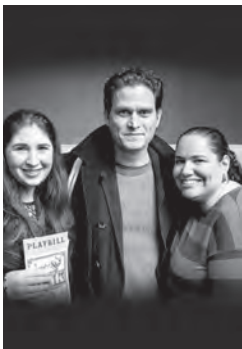
1979 to 1984 the Vivian Beaumont Theater Inc., presented only one season in 1980–81: *The Philadelphia Story*, *Macbeth*, and *The Floating Light Bulb*. In 1983 the Beaumont was rented for Peter Brook's *La Tragédie de Carmen*, while Chicago's Steppenwolf Theatre appeared in *And A Nightingale Sang...* at the Newhouse.

Joseph Papp's New York Shakespeare Festival was in residence from 1973 to 1977. The NYSF's offerings included new plays (*Boom Boom Room*, *Streamers*, and *Short Eyes*), as well as revivals of *Hamlet* with Sam Waterston, *Threepenny Opera* with Raúl Juliá, and *The Cherry Orchard* with Meryl Streep.

The inaugural Beaumont production was George Buchner's *Danton's Death* in 1965, with James Earl Jones, followed by plays by Jean-Paul Sartre, Bertolt Brecht, and Federico Garcia Lorca, as well as Lee J. Cobb in *King Lear*, Jessica Tandy and Al Pacino in *Camino Real*, and Sam Shepard's *Operation Sidewinder* among others.

CONNECT WITH YOUR FAVORITE SHOWS AND ARTISTS!

LCT.ORG |   Lincoln Center Theater |     @LCTheater • #VanyaBway



Photos by Chasi Arney, Tisha Baron and Christopher Ernst

Lincoln Center for the Performing Arts

Board of Directors

Chair

Steven R. Swartz

President & CEO

Henry Timms

Vice Chairs

Joseph Y. Bae
Sheryl D. Kaye
Adebayo O. Ogunlesi
Robert K. Steel
Clara Wu Tsai

Treasurer

Adebayo O. Ogunlesi

Directors

Ronnie Ackman	Zita Ezepeleta	Somesh Khanna	Hon. Stephen C. Robinson
Elizabeth Alexander	Katherine Farley	Anthony Y. Kim	Stephen M. Ross
Sarah Arison	Bart Friedman	Shelly Lazarus	David M. Rubenstein
Jody Gottfried Arnhold	Joshua S. Friedman	Bobby Le Blanc	Ralph Schlosstein
Shari Aronson	Jeffrey L. Gates	Kewsong Lee	Morwin Schmookler
Christina Baker	David Geffen	Betty Levin	Esta Eiger Stecher
Keith T. Banks	Bennett J. Goodman	Dr. Frayda B. Lindemann	Daniel H. Stern
Renée Belfer	Jeffrey W. Greenberg	Bryan Lourd	Tony Tamer
Frank A. Bennack, Jr.	Efraim Grinberg	Vincent Mai	Oscar Tang
Jeffrey C. Campbell	Audrey Butvay Gruss	Scott D. Malkin	Diana Taylor
Cecily M. Carson	Mimi Haas	Peter W. May	Mary Ann Tighe
Diana Chen	Jim Herbert	Kiran Mazumdar-Shaw	Laurie M. Tisch
Kathryn Chenault	John B. Hess	Audra McDonald	Sayu Ueno
Misty Copeland	Robert Hogleund	Philip L. Milstein	Barbara Vogelstein
Richard K. DeScherer	Daisey Holmes	Jim Neary	John E. Waldron
James G. Dinan	Susan S. Huang	Anna Nikolayevsky	Darren Walker
Damien Dwin	David A. Hunt	Clarence Otis	Kenneth L. Wallach
Blair W. Effron	Mahnaz Ispahani Bartos	Dina Powell McCormick	Ann Ziff
Joel S. Ehrenkranz	Kathy Jacobson	Jonelle Procope	
Martin Escobari	Tod Johnson	Shonda Rhimes	
Elizabeth M. Eveillard	Brad S. Karp		

Ex Officio Directors

Hon. Eric Adams, Mayor of the City of New York
Hon. Adrienne Adams, Speaker of the New York City Council
Hon. Susan Donoghue, Commissioner, NYC Department of Parks and Recreation
Hon. Laurie Cumbo, Commissioner, NYC Department of Cultural Affairs

Chairs Emeriti

John D. Rockefeller 3rd, Honorary Chairman
Amyas Ames, Honorary Chairman
Martin E. Segal
George Weissman
Beverly Sills
Bruce Crawford
Frank A. Bennack, Jr.
Katherine Farley

Directors Emeriti Council

Adrienne Arshnt	Roy Furman	Peter S. Kraus	Stephen Stamas
Barbara H. Block	Harvey Golub	Peter L. Malkin	Alair A. Townsend
Richard S. Braddock	Paul B. Guenther	Martin J. Oppenheimer	Ann Unterberg
Diane M. Coffey	William B. Harrison, Jr.	Thomas A. Renyi	Christopher Williams
David A. Coulter	Gerald Hassell	Jim Rosenthal	
Bruce Crawford	Rita Hauser	Susan Rudin	
Hon. William H. Donaldson	Bruce Kovner	Daisy M. Soros	

As of February 2024

70 Lincoln Center Plaza, New York, New York 10023 212.875.5000 LincolnCenter.org

PLAYBILL.COM/VAULT

Lincoln Center Corporate Fund

Lincoln Center Corporate Fund is proud to support the following 10 resident organizations:

The Chamber Music Society of Lincoln Center

Film at Lincoln Center

Jazz at Lincoln Center

The Juilliard School

Lincoln Center for the Performing Arts

Lincoln Center Theater

The Metropolitan Opera

New York City Ballet

New York Philharmonic

The School of American Ballet

CHAIR

Jeffrey Campbell
American Express

LEADER

American Express
Axel Capital Management
Bloomberg Philanthropies
Kenneth C. Griffin, Citadel, and Citadel Securities
Citi
Hearst
Sonia and Paul Jones
JPMorgan Chase & Co.
The New York Times
Point72 Asset Management

BENEFACTOR

ABS Partners Real Estate, LLC
Akin Gump Strauss Hauer & Feld LLP
Benenson Capital Partners, LLC
Brown Rudnick
Davidson Kempner Capital Management, LLC
Diameter Capital Partners LP
EY
Freestone Grove Partners
Fried, Frank, Harris, Shriver & Jacobson LLP
Glenwood Management Corp.
GoldenTree Asset Management
Goldman Sachs & Co.
The Jeffries Companies
King & Spalding LLP
Kramer Levin Naftalis & Frankel LLP
The Marc Haas Foundation

Mitsui & Co. (U.S.A.), Inc.
Morgan Stanley
Pfizer Inc
Rockefeller Brothers Fund
The Rudin Family
Schulte Roth & Zabel
Tatiana Piankova
Foundation
Vornado Realty Trust
Wells Fargo
White & Case
Nanar & Tony Yoseloff

EXECUTIVE

A+e Networks
Alvarez & Marsal
Ankura Consulting Group, LLC
Balyasny Asset Management L.P.
Bank of America
Barclays
BNP Paribas
BNY Mellon
BNY Mellon Real Estate & Mortgage Banking
Brookfield Properties
Citigroup
Cushman & Wakefield, Inc.
Davis Polk & Wardwell
Mr. Alexander Davis
Donald Zucker Company
Elliott Management Group, LLC
Empire State Realty Trust
Fox Corporation
Gotham Organization, Inc.
Hess Corporation
Houlihan Lokey
The IDW Group, LLC
Interpublic Group
Jefferies
Kirkland & Ellis LLP
KPMG LLP
Daniel Krizek, Portfolio Manager, Citadel
Latham & Watkins LLP
Liberty City Ventures
Mr. and Mrs.
Peter L. Malkin
Miller Buckfire & Co., LLC
Oppenheimer & Co. Inc.
Pachulski Stang Ziehl & Jones LLP
Quinn Emanuel Urquhart & Sullivan, LLP
RBC Capital Markets
Rockefeller Group
Kenneth & Karen Rosen
Ruben Companies
Samuel I. Newhouse
Foundation
The Segal Company
Shearman & Sterling LLP
Skadden, Arps, Slate, Meagher & Flom

Solomon Organization
Charitable Trust
The Starr Foundation
Sullivan & Cromwell LLP
Vestal Point Capital
Willkie Farr & Gallagher LLP

PATRON

Almanac Realty Investors
Mr. Daniel Aronson
Dr. Rupa Athreya
BankUnited
Blackstone
BMO Capital Markets
Boston Consulting Group
BXP
Capital One Bank
CBRE
The Chapman Family
Chicago Title Insurance Company
Cleary Gottlieb Steen & Hamilton LLP
David and Susan Coulter
Debevoise & Plimpton LLP
The Durst Organization
Eastdil Secured
E.B. Cohen Insurance & Risk Management
Emmet, Marvin & Martin LLP
Evercore
Extell Development Company
The Law Offices of Kenneth R. Feinberg PC and Camille S. Biros
Mr. Scott Ferguson
First Eagle Investment Management Foundation
Mr. Larry Gagosian
GFP Real Estate
Goldfarb & Fleece LLP
Greenberg Traurig, LLP
Guidepoint Global LLC
Horizon Media Inc.
IBM International
Foundation
JLL
Mr. Che King Leo
Loews Corporation
The Margaret and Daniel Loeb Foundation
Mitsubishi Corporation (Americas)
Morrison & Foerster LLP
M&T Bank
Newmark
NielsenIQ
Nomura
Ogden CAP Properties, LLC
Paul, Weiss, Rifkind, Wharton & Garrison LLP
Perella Weinberg Partners
Proskauer
Related Companies

Richard H. Holzer
Memorial Foundation
Roberts & Holland LLP
Rose Associates, Inc.
Rothschild & Co.
Shorenstein Properties LLC
Silverstein Properties, Inc.
SL Green Realty Corp.
Stroock & Stroock & Lavan LLP
Sy Syms Foundation
Togut, Segal & Segal LLP
UBS
Weiler Arrow Mgt. Co., Inc.
YipitData
Young Conaway Stargatt & Taylor, LLP

FRIEND

ASK LLP
Bloomberg
Bond, Schoeneck & King
Branton Realty
Michael Cirillo
Cole Schotz P.C.
The Corcoran Group
Deloitte CRG
Digby Management Company, LLC
Drivetrain
Dundon Advisers LLC
Faegre Drinker Biddle & Reath LLP
Feil Family Foundation
FTI Consulting, Inc.
Ron Gardfunkel
Bradley Gross
Hunton Andrews Kurth LLP
Edwin Jager
Kobre & Kim
KTBS Law LLP
Thomas H. Lee and Ann Tenenbaum
PricewaterhouseCoopers LLP
Michael C. Rockefeller
Ryder Charitable Foundation
Schonfeld Group Holdings, LLC
Sidley Austin LLP
Societe Generale
Debra and Mitchell Sonkin
The Stop & Stor Charitable Fund
Turner Construction Company
Wachtell, Lipton, Rosen & Katz
Weil, Gotshal & Manges LLP
Kenneth L. Wyse

and 158 supporters under \$5,000 as of February 13, 2024

For information, please contact the Lincoln Center Corporate Fund at LCCorporateFund@lincolncenter.org or call (212) 875-5430. Visit our website, LincolnCenter.org/CorporateFund.

Founding Patrons of Lincoln Center 1957–1969

Lincoln Center gratefully acknowledges the support of those individuals, foundations, and corporations whose gifts to the capital drive helped build Lincoln Center and maintain its operations during its formative years.

The following are chronological lists:

John D. Rockefeller, Jr.
Mr. and Mrs. David M. Keiser
Mrs. Felix M. Warburg
Arthur A. Houghton, Jr.
Mr. and Mrs. John D. Rockefeller 3rd
Mr. and Mrs. Pierre David-Weill
Mrs. V. Beaumont Allen
Mrs. John T. Pratt
Mrs. Richard Charlton
Frasier W. McCann
Mrs. Joseph V. McMullan
Mrs. Arthur Lehman
Mrs. Alta Rockefeller Prentice
Mrs. Robert Walton Goelet
Francis Goelet
Mr. and Mrs. John Goelet
Robert G. Goelet
Mr. and Mrs. Hayward F. Manice
Alfred P. Sloan, Jr.
Mr. and Mrs. Frank Altschul
Mr. and Mrs. Robert E. Blum
Mr. and Mrs. David Rockefeller
Mr. and Mrs. Walter H. Annenberg
Mr. and Mrs. Louis J. Horowitz
John S. Newberry
Barbara Hutton
Lauder Greenway
Mr. and Mrs. Francis Kernan
Mrs. Thomas J. Watson
Mr. and Mrs. Thomas M. Evans
Family of Cornelius N. Bliss
The Family of Julius Rosenwald
Mr. and Mrs. Kenneth Appleton Ivies
James Donahue
Robert Lehman
Audrey Love
Mr. and Mrs. O. Roy Chalk
Nancy Susan Reynolds
Huntington Hartford
The Family of Edward H. and
Mary W. Harriman
Mr. and Mrs. John N. Irwin II
The Family of Carl M. Loeb
Mr. and Mrs. Albert A. List
Mrs. Charles V. Hickox
Mr. and Mrs. Henry Ittleson, Jr.
Mr. and Mrs. John Hay Whitney
Mrs. John D. Rockefeller, Jr.
Mr. and Mrs. Owen Robertson
Cheatham
Mr. and Mrs. Leon Hess
Mrs. Charles W. Englehard
Mr. and Mrs. Irwin Hamilton Kramer
Mr. and Mrs. Lansdell K. Christie
Mr. and Mrs. Cornelius Vanderbilt
Whitney
Mr. and Mrs. Percy Uriss
Mr. and Mrs. Harold D. Uriss
Mrs. Ambrose Monell
Mrs. Hazel Hopkins Ford
The Family of Clarence and
Anne Dillon
Alice Bigelow Tully
Mr. and Mrs. John R. Kimberly
Mr. and Mrs. Charles Shipman
Payson
Mr. and Mrs. Willis H. Booth
Mrs. Vincent Astor
Harold Stirling Vanderbilt
Mrs. Josephine Lawrence Graeber
Allan P. Kirby
Mr. and Mrs. Walker G. Buckner
Mr. and Mrs. Amyas Ames
Mr. and Mrs. Gustave L. Levy
Mr. and Mrs. Henry J. Heinz II
Margaret Mellon Hitchcock
Mr. and Mrs. Seymour H. Knox
Mr. and Mrs. Frank Stanton
Mr. and Mrs. David Hunter McAlpin
Mr. and Mrs. Douglas Dillon
Mr. and Mrs. Lawrence A. Wien
The Family of Carl H. Pforzheimer
Mr. and Mrs. W. Van Alan Clark
Mr. and Mrs. Harry B. Helmsley
Mr. and Mrs. Eugene Ferkauf

Mr. and Mrs. Nathan Cummings
Mr. and Mrs. Andre Meyer
David and Irene Schwartz
Mr. and Mrs. Edwin S. Marks
Mr. and Mrs. Richard Rodgers
Mr. and Mrs. Gardner Cowles
Mr. and Mrs. Roger L. Stevens
Mr. and Mrs. Louis Calder
C. Michael Paul
Mr. and Mrs. Samuel Lemberg
Mr. and Mrs. Samuel H. Golding
Mr. and Mrs. Shelby Cullom Davis
The Family of Joseph P. Kennedy
The Mazer Family
Mr. and Mrs. James P. Warburg
The Family of Solomon and
Rose S. Lasdon
Mrs. Edsel Ford
The Fribourg Family
Irving Geist
Mr. and Mrs. Joseph A. Neff
Enid Annenberg Haupt
Mr. and Mrs. Lester-Francis Avnet
Mrs. Lytle Hull
Mr. and Mrs. Leonard Block
Mr. and Mrs. Joseph L. Mailman
Mr. and Mrs. Harold L. Fierman
Mr. and Mrs. Richard Salomon
Mr. and Mrs. Frank E. Taplin, Jr.
Mr. and Mrs. Herbert M. Singer
Stavros S. Niarchos
Bernice Chrysler Garbisch
The Family of Erwin S. Wolfson
Carl A. Morse
Mr. and Mrs. Jack Linsky
The Durst Family
Mr. and Mrs. Saul Jeffee
Mr. and Mrs. Sol Kittay
Mr. and Mrs. Charles H. Dyson
Lila Acheson Wallace
Mr. and Mrs. Bruce L. Zenkel
Richard J. Schwartz
Mr. and Mrs. Milton Petrie
Evelynne and Max M. Low
The Family of Ethel S. Mehlman
Aye Simon
Mrs. Jean Mauze
Mrs. Louis Mark
Charles H. Revuson
Mr. and Mrs. Howard Lipman
Harry Lebensfeld
Minna and Benjamin M. Reeves
Mr. and Mrs. Irving Mitchell Felt
Mr. and Mrs. Edouard L. Cournand
Miss Julie A. Spies
Frank and Selma Kalisch
Mr. and Mrs. Avery Fisher
Anne C. Burns
Mr. and Mrs. Christopher T. Cheney
Louis R. Simon
Carrie S. Beinecke
Dr. and Mrs. Jerome S. Coles
Blanche and A.L. Levine
Emily Fisher Landau
Three anonymous donors
The Rockefeller Foundation
The Ford Foundation
Exxon Corporation
Avalon Foundation
First National City Educational and
Charitable Foundation
The Chase Manhattan Bank
Foundation
Manufacturers Hanover Trust
Company
Corning Glass Works Foundation
Chemical Bank
Morgan Guaranty Trust Company of
New York
James Foundation of New York, Inc.
Bankers Trust Company
The Commonwealth Fund
The Equitable Life Assurance
Society of the United States

Lazard & Freres & Co.
IBM Corporation
Texaco Inc.
Metropolitan Life Insurance
Company
New York Life Insurance Company
Juilliard Musical Foundation
Bell System Companies in
New York City
Union Carbide Corporation
United States Steel Foundation
Consolidated Edison Company of
New York, Inc.
Carnegie Corporation of New York
New York Foundation
Columbia Broadcasting System
Shell Companies Foundation,
Incorporated
RCA Corporation
Bloomingtondale's
Reader's Digest Association, Inc.
Old Dominion Foundation
The John D. Hartford Foundation, Inc.
The Bodman Foundation
Mobil Oil Corporation
The Heckscher Foundation for
Children
Schenley Industries, Inc.
Revlon Foundation
Charles and Rosanna Batchelor
Memorial, Inc.
Standard Oil Company of California
Rockefeller Brothers Fund
Consolidated Natural Gas Company
Samuel H. Kress Foundation
Bethlehem Steel Corporation
Vivian B. Allen Foundation, Inc.
Irving Trust Company
The Spiros G. Ponty Foundation
Charles Ulrick and Josephine Bay
Foundation, Inc.
Josephine Bay Paul and
C. Michael Paul Foundation Inc.
Wertheim & Co.
Firestone Foundation
William S. Paley Foundation, Inc.
The Howard Johnson Foundation
Lehman Brothers
W.H. Charities
The George F. Baker Trust
D.S. and R.H. Gottesman Foundation
Glen Alden Corporation
The Philip and Janice Levin
Foundation
Carl Marks & Company, Inc.
Beinecke Foundation
Bear, Stearns & Co.
J.P. Stevens & Co., Inc. Foundation
The First Boston Foundation Trust
Korvettes-Division of Arlen Realty &
Development Corporation
The New York Times
The Samuel & David Rose Fund
Sterling National Bank of New York
Van Munching & Co., Inc.
Heineken Holland Beer
United Brands Foundation
Rapid-America Corporation
The Seigfried & Josephine Bieber
Foundation
Sherman Fairchild Foundation, Inc.
Herman Goldman Foundation